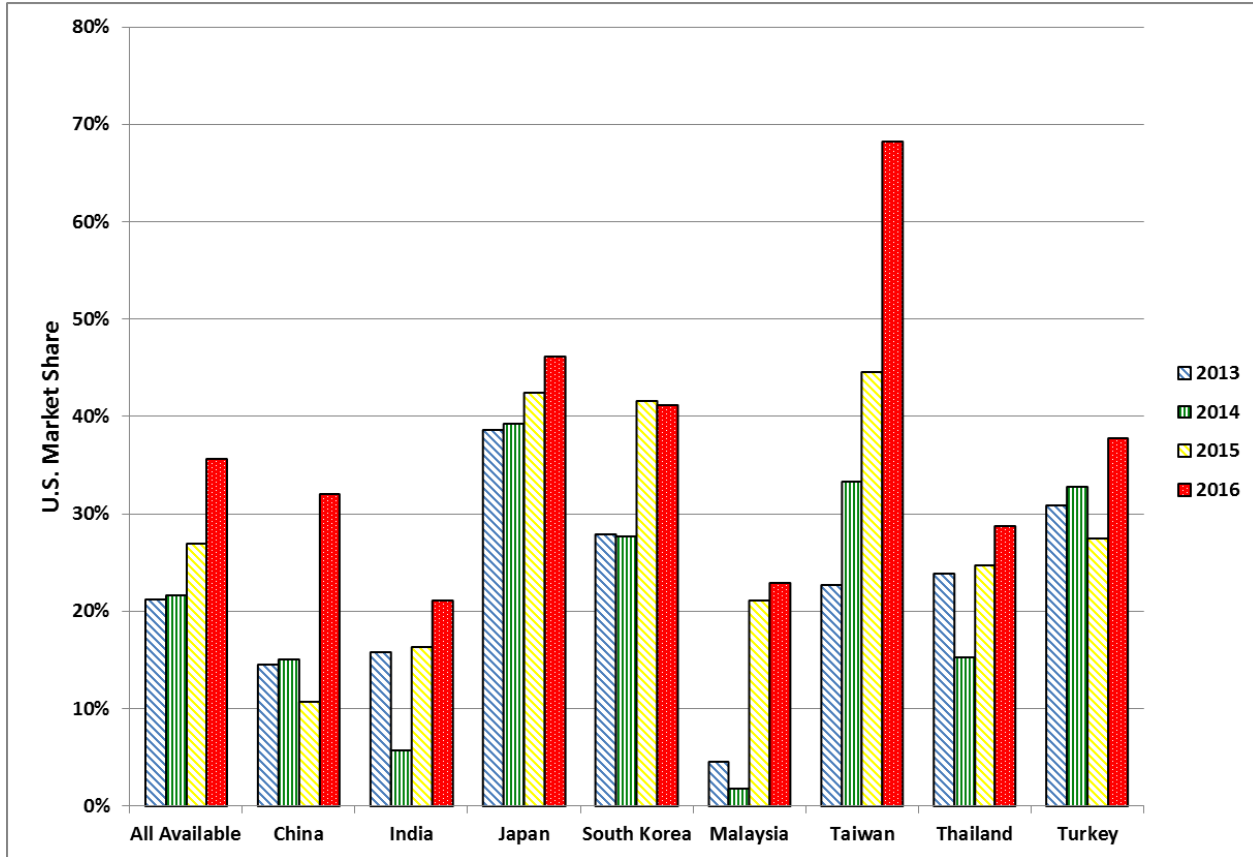




# Cotton: World Markets and Trade

## U.S. Market Share Expanding Across Markets



U.S. exports in 2016/17 are forecast at 14.0 million bales, a 53-percent increase from the previous season. With global trade expected to rise by less than 4 percent and with stable import forecasts for major U.S. markets, U.S. market share will have to expand significantly in many countries for the forecast to be obtained. Overall, the U.S. share of world trade is expected to reach 39 percent, up from 26 percent last season, which would be the highest level in 6 years.

Available customs data from countries that account for over two-thirds of total world imports shows that the U.S. share of imports in these markets for the Aug-Dec 2017 period was 36 percent, compared to 27 percent in the same period a year earlier, in line with the overall increase in U.S. trade share indicated by this month's forecast. Higher U.S. market share is indicated in nearly all U.S. markets with data reported, with an exceptional increase in Taiwan. The U.S. share of China's imports has rebounded remarkably from 11 percent last year (the lowest in over 2 decades) to 35 percent, which is in line with the historical average.

For major markets where there is no timely customs data (specifically Vietnam, Indonesia, Pakistan, and Bangladesh), reported U.S. exports for the Aug-Feb period are up by more than 140 percent, even though total imports by these countries are expected to show a much lower rate of growth. This further supports the strong growth in U.S. global market share.

For an email subscription, click here to register: <https://public.govdelivery.com/accounts/USDAFAS/subscriber/new>.

## Overview

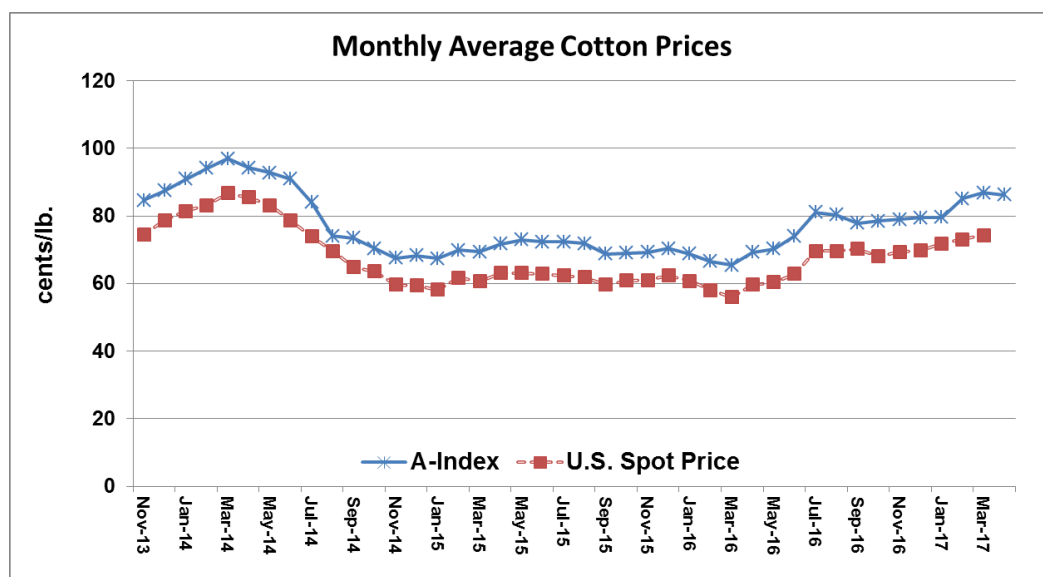
For 2016/17, global use is raised only marginally, and production is raised, resulting in global ending stocks up slightly. Global trade is up marginally, while U.S. exports are raised by 800,000 bales, reducing U.S. ending stocks. The U.S. season-average farm price forecast is lowered a half-cent to 68 cents/pound.

For current prices received by farmers click here; [NASS farm price](#)

## Prices

The A-Index and U.S. spot prices ended March off slightly from levels earlier in the month, which were the highest seen in nearly three years.

For more information on U.S. spot price click here; [AMS Cotton Market News](#)



## 2016/17 TRADE OUTLOOK

### **Major Importers:**

- **Bangladesh** is cut 200,000 bales to 6.2 million on weakening reported import values and low availability from major partners such as Uzbekistan.
- **Thailand** is raised 100,000 bales to 1.3 million as demand is now expected to be stronger in the latter part of the season.
- **Indonesia** is increased 100,000 bales to 3.2 million on strong shipments from major suppliers, especially the United States.
- **Pakistan** is raised 100,000 bales to 2.7 million on higher mill use.
- **India** is up 100,000 bales to 2.3 million on a strong pace of trade to date, likely reflecting internal prices that remain high compared to the world.

### **Major Exporters:**

- **United States** is hiked 800,000 bales to 14.0 million on continued high shipments and sales to all major markets.
- **India** is lowered 500,000 bales to 4.0 million as high domestic prices slow sales.
- **Australia** is lowered 200,000 bales to 3.9 million as old crops stocks are exhausted and yet-to-arrive new-crop faces stronger competition.
- **Uzbekistan** is down 200,000 bales to 1.5 million on lower demand in some of its major markets as well as policies withholding supplies for domestic use.
- **Greece** is raised 100,000 bales to 950,000 on higher production as well as a strong pace of trade to date.
- **Brazil** is raised 100,000 bales to 2.9 million on higher carryin stocks due to reduced use estimates in the back year.

The Foreign Agricultural Service (FAS) updates its production, supply and distribution (PSD) database for cotton, oilseeds, and grains at 12:00 p.m. on the day the *World Agricultural Supply and Demand Estimates* (WASDE) report is released. This circular is released by 12:15 p.m.

### **FAS Reports and Databases:**

**\*\*Updated\*\*** Current *World Market and Trade and World Agricultural Production* Reports:

<https://apps.fas.usda.gov/psdonline/app/index.html#/app/downloads>

Archives *World Market and Trade and World Agricultural Production* Reports:

<http://usda.mannlib.cornell.edu/MannUsda/viewTaxonomy.do?taxonomyID=7>

**\*\*Updated\*\*** Production, Supply and Distribution Database (PSD Online):

<https://apps.fas.usda.gov/psdonline/app/index.html#/app/home>

Global Agricultural Trade System (U.S. Exports and Imports):

<http://apps.fas.usda.gov/gats/default.aspx>

Export Sales Report:

<http://apps.fas.usda.gov/esrquery/>

Global Agricultural Information Network (Agricultural Attaché Reports):

<http://gain.fas.usda.gov/Pages/Default.aspx>

### **Other USDA Reports:**

World Agricultural Supply and Demand Estimates (WASDE):

<http://www.usda.gov/oce/commodity/wasde/>

Economic Research Service:

<http://www.ers.usda.gov/topics/crops>

National Agricultural Statistics Service:

<http://www.nass.usda.gov/Publications/>

Questions may be directed to:

James Johnson (202) 690-1546 [James.Johnson@fas.usda.gov](mailto:James.Johnson@fas.usda.gov)

Lyman Stone (202) 720-0683 [Lyman.Stone@fas.usda.gov](mailto:Lyman.Stone@fas.usda.gov)

**Summary of Changes in estimates and Forecasts from Last Month**  
**(1,000 480 lb Bales and 1,000 Ha)**

| <b>Country Mktg<br/>Year</b> | <b>Area<br/>Harvested</b> | <b>Beginning<br/>Stocks</b> | <b>Production</b> | <b>Imports</b> | <b>Exports</b> | <b>Use</b> | <b>Loss</b> | <b>Total Dom.<br/>Cons.</b> | <b>Ending<br/>Stocks</b> |
|------------------------------|---------------------------|-----------------------------|-------------------|----------------|----------------|------------|-------------|-----------------------------|--------------------------|
| <b>Albania</b>               |                           |                             |                   |                |                |            |             |                             |                          |
| 2015/16                      | 0                         | 0                           | 0                 | -10            | 0              | -8         | 0           | -8                          | -2                       |
| 2016/17                      | 0                         | -2                          | 0                 | -13            | 0              | -12        | 0           | -12                         | -3                       |
| <b>Australia</b>             |                           |                             |                   |                |                |            |             |                             |                          |
| 2016/17                      | 30                        | 0                           | -100              | 0              | -200           | 0          | 0           | 0                           | 100                      |
| <b>Bangladesh</b>            |                           |                             |                   |                |                |            |             |                             |                          |
| 2016/17                      | 0                         | 0                           | 0                 | -200           | 0              | -200       | 0           | -200                        | 0                        |
| <b>Belgium-Luxembourg</b>    |                           |                             |                   |                |                |            |             |                             |                          |
| 2016/17                      | 0                         | 0                           | 0                 | -5             | -2             | -2         | 0           | -2                          | -1                       |
| <b>Brazil</b>                |                           |                             |                   |                |                |            |             |                             |                          |
| 2015/16                      | 0                         | 0                           | 0                 | 0              | 0              | -100       | 0           | -100                        | 100                      |
| 2016/17                      | 0                         | 100                         | 200               | 25             | 100            | 0          | 0           | 0                           | 225                      |
| <b>Bulgaria</b>              |                           |                             |                   |                |                |            |             |                             |                          |
| 2016/17                      | 0                         | 0                           | 0                 | 10             | 0              | 10         | 0           | 10                          | 0                        |
| <b>China</b>                 |                           |                             |                   |                |                |            |             |                             |                          |
| 2016/17                      | 50                        | 0                           | 250               | 0              | 0              | 0          | 0           | 0                           | 250                      |
| <b>Colombia</b>              |                           |                             |                   |                |                |            |             |                             |                          |
| 2016/17                      | 0                         | 0                           | 0                 | -15            | 0              | -10        | 0           | -10                         | -5                       |
| <b>Germany</b>               |                           |                             |                   |                |                |            |             |                             |                          |
| 2016/17                      | 0                         | 0                           | 0                 | -25            | 0              | -15        | 0           | -15                         | -10                      |
| <b>Greece</b>                |                           |                             |                   |                |                |            |             |                             |                          |
| 2016/17                      | 10                        | 0                           | 50                | 0              | 100            | -5         | -25         | -30                         | -20                      |
| <b>Hungary</b>               |                           |                             |                   |                |                |            |             |                             |                          |
| 2016/17                      | 0                         | 0                           | 0                 | 1              | 0              | 0          | 0           | 0                           | 1                        |
| <b>India</b>                 |                           |                             |                   |                |                |            |             |                             |                          |
| 2016/17                      | 0                         | 0                           | 0                 | 100            | -500           | 0          | 0           | 0                           | 600                      |
| <b>Indonesia</b>             |                           |                             |                   |                |                |            |             |                             |                          |
| 2016/17                      | 0                         | 0                           | 0                 | 100            | 0              | 50         | 0           | 50                          | 50                       |
| <b>Israel</b>                |                           |                             |                   |                |                |            |             |                             |                          |
| 2011/12                      | 0                         | 0                           | 0                 | 0              | -10            | 0          | 0           | 0                           | 10                       |
| 2012/13                      | 0                         | 10                          | 0                 | 0              | 0              | 0          | 0           | 0                           | 10                       |
| 2013/14                      | 0                         | 10                          | 0                 | 0              | 15             | 0          | 0           | 0                           | -5                       |

**Summary of Changes in estimates and Forecasts from Last Month (Continued)**  
**(1,000 480 lb Bales and 1,000 Ha)**

| <b>Country Mktg<br/>Year</b> | <b>Area<br/>Harvested</b> | <b>Beginning<br/>Stocks</b> | <b>Production</b> | <b>Imports</b> | <b>Exports</b> | <b>Use</b> | <b>Loss</b> | <b>Total Dom.<br/>Cons.</b> | <b>Ending<br/>Stocks</b> |
|------------------------------|---------------------------|-----------------------------|-------------------|----------------|----------------|------------|-------------|-----------------------------|--------------------------|
| 2014/15                      | 0                         | -5                          | 0                 | 0              | -20            | 0          | 0           | 0                           | 15                       |
| 2015/16                      | 0                         | 15                          | 0                 | 0              | -5             | 0          | 0           | 0                           | 20                       |
| 2016/17                      | 0                         | 20                          | 0                 | 0              | 15             | 0          | 0           | 0                           | 5                        |
| <b>Mali</b>                  |                           |                             |                   |                |                |            |             |                             |                          |
| 2016/17                      | -15                       | 0                           | 40                | 0              | 25             | 0          | 0           | 0                           | 15                       |
| <b>Pakistan</b>              |                           |                             |                   |                |                |            |             |                             |                          |
| 2016/17                      | 0                         | 0                           | 0                 | 100            | 50             | 100        | 0           | 100                         | -50                      |
| <b>Portugal</b>              |                           |                             |                   |                |                |            |             |                             |                          |
| 2016/17                      | 0                         | 0                           | 0                 | -5             | 1              | -5         | 0           | -5                          | -1                       |
| <b>South Africa</b>          |                           |                             |                   |                |                |            |             |                             |                          |
| 2016/17                      | 9                         | 0                           | 19                | 0              | 0              | 5          | 0           | 5                           | 14                       |
| <b>Spain</b>                 |                           |                             |                   |                |                |            |             |                             |                          |
| 2015/16                      | 0                         | 0                           | -10               | 0              | 0              | 0          | 0           | 0                           | -10                      |
| 2016/17                      | 0                         | -10                         | 1                 | 0              | 0              | 0          | 0           | 0                           | -9                       |
| <b>Switzerland</b>           |                           |                             |                   |                |                |            |             |                             |                          |
| 2016/17                      | 0                         | 0                           | 0                 | -7             | 0              | -5         | 0           | -5                          | -2                       |
| <b>Taiwan</b>                |                           |                             |                   |                |                |            |             |                             |                          |
| 2016/17                      | 0                         | 0                           | 0                 | -25            | 0              | 0          | 0           | 0                           | -25                      |
| <b>Thailand</b>              |                           |                             |                   |                |                |            |             |                             |                          |
| 2015/16                      | 0                         | 0                           | 0                 | 0              | 1              | 20         | 0           | 20                          | -21                      |
| 2016/17                      | 0                         | -21                         | 0                 | 100            | 1              | 100        | 0           | 100                         | -22                      |
| <b>Turkey</b>                |                           |                             |                   |                |                |            |             |                             |                          |
| 2016/17                      | 0                         | 0                           | 0                 | 0              | -50            | 0          | 0           | 0                           | 50                       |
| <b>United States</b>         |                           |                             |                   |                |                |            |             |                             |                          |
| 2016/17                      | 0                         | 0                           | 0                 | 0              | 800            | 0          | 0           | 0                           | -800                     |
| <b>Uzbekistan</b>            |                           |                             |                   |                |                |            |             |                             |                          |
| 2015/16                      | 0                         | 0                           | 0                 | 0              | 0              | 100        | 0           | 100                         | -100                     |
| 2016/17                      | 0                         | -100                        | 75                | 0              | -200           | 150        | 0           | 150                         | 25                       |
| <b>Zimbabwe</b>              |                           |                             |                   |                |                |            |             |                             |                          |
| 2016/17                      | 25                        | 0                           | 50                | 0              | 10             | 0          | 0           | 0                           | 40                       |

**World**

**Summary of Changes in estimates and Forecasts from Last Month (Continued)**  
**(1,000 480 lb Bales and 1,000 Ha)**

| <b>Country Mktg<br/>Year</b> | <b>Area<br/>Harvested</b> | <b>Beginning<br/>Stocks</b> | <b>Production</b> | <b>Imports</b> | <b>Exports</b> | <b>Use</b> | <b>Loss</b> | <b>Total Dom.<br/>Cons.</b> | <b>Ending<br/>Stocks</b> |
|------------------------------|---------------------------|-----------------------------|-------------------|----------------|----------------|------------|-------------|-----------------------------|--------------------------|
| <b>World</b>                 |                           |                             |                   |                |                |            |             |                             |                          |
| 2011/12                      | 0                         | 0                           | 0                 | 0              | -10            | 0          | 0           | 0                           | 10                       |
| 2012/13                      | 0                         | 10                          | 0                 | 0              | 0              | 0          | 0           | 0                           | 10                       |
| 2013/14                      | 0                         | 10                          | 0                 | 0              | 15             | 0          | 0           | 0                           | -5                       |
| 2014/15                      | 0                         | -5                          | 0                 | 0              | -20            | 0          | 0           | 0                           | 15                       |
| 2015/16                      | 0                         | 15                          | -10               | -10            | -4             | 12         | 0           | 12                          | -13                      |
| 2016/17                      | 109                       | -13                         | 585               | 141            | 150            | 161        | -25         | 136                         | 427                      |

**Table 01 Cotton World Supply, Use, and Trade (Season Beginning August 1)**  
(1000 MT)

|                             | 2012/13       | 2013/14       | 2014/15       | 2015/16       | Mar<br>2016/17 | Apr<br>2016/17 |
|-----------------------------|---------------|---------------|---------------|---------------|----------------|----------------|
| <b>Production</b>           |               |               |               |               |                |                |
| India                       | 6,205         | 6,750         | 6,423         | 5,748         | 5,879          | 5,879          |
| China                       | 7,620         | 7,131         | 6,532         | 4,790         | 4,899          | 4,953          |
| United States               | 3,770         | 2,811         | 3,553         | 2,806         | 3,751          | 3,751          |
| Pakistan                    | 2,025         | 2,068         | 2,308         | 1,524         | 1,676          | 1,676          |
| Brazil                      | 1,306         | 1,742         | 1,524         | 1,285         | 1,415          | 1,459          |
| Australia                   | 1,002         | 893           | 501           | 621           | 980            | 958            |
| Uzbekistan                  | 1,002         | 893           | 849           | 827           | 773            | 789            |
| Other                       | 4,047         | 3,920         | 4,260         | 3,456         | 3,645          | 3,679          |
| <b>Total</b>                | <b>26,976</b> | <b>26,207</b> | <b>25,950</b> | <b>21,057</b> | <b>23,018</b>  | <b>23,145</b>  |
| <b>USE Dom. Consumption</b> |               |               |               |               |                |                |
| China                       | 7,838         | 7,512         | 7,403         | 7,620         | 7,893          | 7,893          |
| India                       | 4,736         | 5,062         | 5,334         | 5,280         | 5,171          | 5,171          |
| Pakistan                    | 2,341         | 2,264         | 2,308         | 2,243         | 2,221          | 2,243          |
| Bangladesh                  | 1,023         | 1,154         | 1,263         | 1,328         | 1,459          | 1,415          |
| Turkey                      | 1,317         | 1,372         | 1,393         | 1,448         | 1,372          | 1,372          |
| Vietnam                     | 490           | 697           | 893           | 958           | 1,154          | 1,154          |
| United States               | 762           | 773           | 778           | 751           | 718            | 718            |
| Other                       | 5,106         | 5,069         | 4,885         | 4,592         | 4,492          | 4,549          |
| <b>Total</b>                | <b>23,612</b> | <b>23,902</b> | <b>24,257</b> | <b>24,220</b> | <b>24,479</b>  | <b>24,514</b>  |
| <b>Imports</b>              |               |               |               |               |                |                |
| Bangladesh                  | 1,089         | 1,154         | 1,252         | 1,350         | 1,393          | 1,350          |
| Vietnam                     | 525           | 697           | 931           | 980           | 1,176          | 1,176          |
| China                       | 4,426         | 3,075         | 1,804         | 959           | 980            | 980            |
| Turkey                      | 804           | 924           | 800           | 918           | 708            | 708            |
| Indonesia                   | 683           | 651           | 728           | 640           | 675            | 697            |
| Pakistan                    | 392           | 261           | 207           | 718           | 566            | 588            |
| India                       | 258           | 147           | 267           | 233           | 479            | 501            |
| Other                       | 2,201         | 2,069         | 1,864         | 1,863         | 1,852          | 1,861          |
| <b>Total</b>                | <b>10,378</b> | <b>8,978</b>  | <b>7,852</b>  | <b>7,663</b>  | <b>7,829</b>   | <b>7,859</b>   |
| <b>Exports</b>              |               |               |               |               |                |                |
| United States               | 2,836         | 2,293         | 2,449         | 1,993         | 2,874          | 3,048          |
| India                       | 1,690         | 2,016         | 914           | 1,255         | 980            | 871            |
| Australia                   | 1,343         | 1,056         | 523           | 621           | 893            | 849            |
| Brazil                      | 938           | 486           | 851           | 939           | 610            | 631            |
| Uzbekistan                  | 697           | 588           | 533           | 544           | 370            | 327            |
| Burkina                     | 261           | 278           | 229           | 283           | 250            | 250            |
| Mali                        | 174           | 196           | 185           | 218           | 234            | 239            |
| Other                       | 2,166         | 2,015         | 2,001         | 1,831         | 1,616          | 1,644          |
| <b>Total</b>                | <b>10,105</b> | <b>8,928</b>  | <b>7,686</b>  | <b>7,683</b>  | <b>7,827</b>   | <b>7,860</b>   |
| <b>Ending Stocks</b>        |               |               |               |               |                |                |
| China                       | 10,965        | 13,653        | 14,570        | 12,671        | 10,646         | 10,701         |
| India                       | 2,568         | 2,495         | 2,936         | 2,383         | 2,590          | 2,720          |
| Brazil                      | 1,263         | 1,670         | 1,640         | 1,363         | 1,526          | 1,575          |
| United States               | 827           | 512           | 795           | 827           | 980            | 806            |
| Australia                   | 522           | 393           | 396           | 421           | 533            | 555            |
| Pakistan                    | 590           | 539           | 629           | 569           | 553            | 542            |
| Turkey                      | 286           | 295           | 347           | 345           | 307            | 317            |
| Other                       | 3,038         | 2,937         | 3,015         | 2,557         | 2,566          | 2,577          |
| <b>Total</b>                | <b>20,060</b> | <b>22,494</b> | <b>24,329</b> | <b>21,136</b> | <b>19,700</b>  | <b>19,793</b>  |



**Table 02 Cotton World Supply, Use, and Trade (Season Beginning August 1)**  
(1000 Bales)

|                             | 2012/13        | 2013/14        | 2014/15        | 2015/16        | Mar<br>2016/17 | Apr<br>2016/17 |
|-----------------------------|----------------|----------------|----------------|----------------|----------------|----------------|
| <b>Production</b>           |                |                |                |                |                |                |
| Australia                   | 4,600          | 4,100          | 2,300          | 2,850          | 4,500          | 4,400          |
| Brazil                      | 6,000          | 8,000          | 7,000          | 5,900          | 6,500          | 6,700          |
| China                       | 35,000         | 32,750         | 30,000         | 22,000         | 22,500         | 22,750         |
| India                       | 28,500         | 31,000         | 29,500         | 26,400         | 27,000         | 27,000         |
| Pakistan                    | 9,300          | 9,500          | 10,600         | 7,000          | 7,700          | 7,700          |
| United States               | 17,314         | 12,909         | 16,319         | 12,888         | 17,230         | 17,230         |
| Uzbekistan                  | 4,600          | 4,100          | 3,900          | 3,800          | 3,550          | 3,625          |
| Other                       | 18,586         | 18,006         | 19,568         | 15,875         | 16,739         | 16,899         |
| <b>Total</b>                | <b>123,900</b> | <b>120,365</b> | <b>119,187</b> | <b>96,713</b>  | <b>105,719</b> | <b>106,304</b> |
| <b>USE Dom. Consumption</b> |                |                |                |                |                |                |
| Bangladesh                  | 4,700          | 5,300          | 5,800          | 6,100          | 6,700          | 6,500          |
| Brazil                      | 4,100          | 4,200          | 3,400          | 3,100          | 3,200          | 3,200          |
| China                       | 36,000         | 34,500         | 34,000         | 35,000         | 36,250         | 36,250         |
| India                       | 21,750         | 23,250         | 24,500         | 24,250         | 23,750         | 23,750         |
| Indonesia                   | 3,050          | 3,050          | 3,250          | 3,000          | 3,050          | 3,100          |
| Mexico                      | 1,800          | 1,850          | 1,850          | 1,850          | 1,725          | 1,725          |
| Pakistan                    | 10,750         | 10,400         | 10,600         | 10,300         | 10,200         | 10,300         |
| Turkey                      | 6,050          | 6,300          | 6,400          | 6,650          | 6,300          | 6,300          |
| United States               | 3,500          | 3,550          | 3,575          | 3,450          | 3,300          | 3,300          |
| Vietnam                     | 2,250          | 3,200          | 4,100          | 4,400          | 5,300          | 5,300          |
| Other                       | 14,500         | 14,182         | 13,936         | 13,141         | 12,656         | 12,867         |
| <b>Total</b>                | <b>108,450</b> | <b>109,782</b> | <b>111,411</b> | <b>111,241</b> | <b>112,431</b> | <b>112,592</b> |
| <b>Imports</b>              |                |                |                |                |                |                |
| Bangladesh                  | 5,000          | 5,300          | 5,750          | 6,200          | 6,400          | 6,200          |
| China                       | 20,327         | 14,122         | 8,284          | 4,406          | 4,500          | 4,500          |
| India                       | 1,187          | 675            | 1,226          | 1,072          | 2,200          | 2,300          |
| Indonesia                   | 3,137          | 2,989          | 3,345          | 2,941          | 3,100          | 3,200          |
| Korea, South                | 1,314          | 1,286          | 1,321          | 1,175          | 1,000          | 1,000          |
| Mexico                      | 950            | 1,040          | 830            | 975            | 1,075          | 1,075          |
| Pakistan                    | 1,800          | 1,200          | 950            | 3,300          | 2,600          | 2,700          |
| Thailand                    | 1,511          | 1,546          | 1,475          | 1,275          | 1,200          | 1,300          |
| Turkey                      | 3,692          | 4,246          | 3,675          | 4,218          | 3,250          | 3,250          |
| Vietnam                     | 2,410          | 3,200          | 4,275          | 4,500          | 5,400          | 5,400          |
| Other                       | 6,336          | 5,632          | 4,934          | 5,132          | 5,232          | 5,173          |
| <b>Total</b>                | <b>47,664</b>  | <b>41,236</b>  | <b>36,065</b>  | <b>35,194</b>  | <b>35,957</b>  | <b>36,098</b>  |
| <b>Exports</b>              |                |                |                |                |                |                |
| Australia                   | 6,168          | 4,852          | 2,404          | 2,850          | 4,100          | 3,900          |
| Benin                       | 350            | 475            | 525            | 725            | 725            | 725            |
| Brazil                      | 4,307          | 2,230          | 3,910          | 4,314          | 2,800          | 2,900          |
| Burkina                     | 1,200          | 1,275          | 1,050          | 1,300          | 1,150          | 1,150          |
| Greece                      | 1,100          | 1,285          | 1,168          | 959            | 850            | 950            |
| India                       | 7,761          | 9,261          | 4,199          | 5,764          | 4,500          | 4,000          |
| Mali                        | 800            | 900            | 850            | 1,000          | 1,075          | 1,100          |
| Turkmenistan                | 800            | 1,625          | 1,500          | 1,250          | 800            | 800            |
| United States               | 13,026         | 10,530         | 11,246         | 9,153          | 13,200         | 14,000         |
| Uzbekistan                  | 3,200          | 2,700          | 2,450          | 2,500          | 1,700          | 1,500          |
| Other                       | 7,699          | 5,871          | 5,997          | 5,474          | 5,049          | 5,074          |
| <b>Total</b>                | <b>46,411</b>  | <b>41,004</b>  | <b>35,299</b>  | <b>35,289</b>  | <b>35,949</b>  | <b>36,099</b>  |
| <b>Ending Stocks</b>        |                |                |                |                |                |                |
| Australia                   | 2,399          | 1,807          | 1,818          | 1,933          | 2,448          | 2,548          |
| Brazil                      | 5,801          | 7,668          | 7,532          | 6,259          | 7,009          | 7,234          |
| China                       | 50,361         | 62,707         | 66,920         | 58,198         | 48,898         | 49,148         |
| India                       | 11,795         | 11,459         | 13,486         | 10,944         | 11,894         | 12,494         |
| Pakistan                    | 2,710          | 2,475          | 2,890          | 2,615          | 2,540          | 2,490          |
| Turkey                      | 1,315          | 1,357          | 1,596          | 1,583          | 1,408          | 1,458          |
| United States               | 3,800          | 2,350          | 3,650          | 3,800          | 4,500          | 3,700          |
| Other                       | 13,952         | 13,488         | 13,848         | 11,746         | 11,785         | 11,837         |
| <b>Total</b>                | <b>92,133</b>  | <b>103,311</b> | <b>111,740</b> | <b>97,078</b>  | <b>90,482</b>  | <b>90,909</b>  |

**Table 04 Cotton Area, Yield, and Production**

| Country / Region          | Area<br>(Million hectares) |         |               |       | Yield<br>(Kilograms per hectare) |         |               |       | Production<br>(Million 480 lb. bales) |         |               |        | Change in Production |         |                |         |
|---------------------------|----------------------------|---------|---------------|-------|----------------------------------|---------|---------------|-------|---------------------------------------|---------|---------------|--------|----------------------|---------|----------------|---------|
|                           | 2014/15                    | Prel.   | 2016/17 Proj. |       | 2014/15                          | Prel.   | 2016/17 Proj. |       | 2014/15                               | Prel.   | 2016/17 Proj. |        | From last month      |         | From last year |         |
|                           |                            | 2015/16 | Mar           | Apr   |                                  | 2015/16 | Mar           | Apr   |                                       | 2015/16 | Mar           | Apr    | MBales               | Percent | MBales         | Percent |
| <b>World</b>              | 34.21                      | 30.50   | 29.22         | 29.33 | 758                              | 690     | 788           | 789   | 119.19                                | 96.71   | 105.72        | 106.30 | 0.59                 | 0.55    | 9.59           | 9.92    |
| <b>United States</b>      | 3.78                       | 3.27    | 3.85          | 3.85  | 939                              | 859     | 974           | 974   | 16.32                                 | 12.89   | 17.23         | 17.23  | 0.00                 | 0.00    | 4.34           | 33.69   |
| <b>Total Foreign</b>      | 30.43                      | 27.23   | 25.37         | 25.48 | 736                              | 670     | 759           | 761   | 102.87                                | 83.83   | 88.49         | 89.07  | 0.59                 | 0.66    | 5.25           | 6.26    |
| <b>Western Hemisphere</b> |                            |         |               |       |                                  |         |               |       |                                       |         |               |        |                      |         |                |         |
| Brazil                    | 1.02                       | 0.96    | 0.93          | 0.93  | 1,494                            | 1,345   | 1,522         | 1,569 | 7.00                                  | 5.90    | 6.50          | 6.70   | 0.20                 | 3.08    | 0.80           | 13.56   |
| Mexico                    | 0.18                       | 0.13    | 0.10          | 0.10  | 1,578                            | 1,521   | 1,579         | 1,579 | 1.32                                  | 0.91    | 0.73          | 0.73   | 0.00                 | 0.00    | -0.18          | -20.15  |
| Argentina                 | 0.48                       | 0.38    | 0.30          | 0.30  | 499                              | 479     | 508           | 508   | 1.10                                  | 0.83    | 0.70          | 0.70   | 0.00                 | 0.00    | -0.13          | -15.15  |
| Paraguay                  | 0.02                       | 0.01    | 0.01          | 0.01  | 435                              | 419     | 416           | 416   | 0.03                                  | 0.03    | 0.02          | 0.02   | 0.00                 | 0.00    | 0.00           | -16.00  |
| Peru                      | 0.03                       | 0.02    | 0.01          | 0.01  | 992                              | 1,021   | 1,005         | 1,005 | 0.12                                  | 0.08    | 0.06          | 0.06   | 0.00                 | 0.00    | -0.02          | -20.00  |
| Colombia                  | 0.03                       | 0.03    | 0.02          | 0.02  | 844                              | 562     | 794           | 794   | 0.12                                  | 0.08    | 0.06          | 0.06   | 0.00                 | 0.00    | -0.02          | -22.50  |
| <b>Africa</b>             |                            |         |               |       |                                  |         |               |       |                                       |         |               |        |                      |         |                |         |
| Burkina                   | 0.66                       | 0.66    | 0.70          | 0.70  | 445                              | 363     | 404           | 404   | 1.35                                  | 1.10    | 1.30          | 1.30   | 0.00                 | 0.00    | 0.20           | 18.18   |
| Mali                      | 0.54                       | 0.55    | 0.67          | 0.66  | 419                              | 390     | 390           | 412   | 1.04                                  | 0.98    | 1.20          | 1.24   | 0.04                 | 3.33    | 0.27           | 27.18   |
| Cote d'Ivoire             | 0.42                       | 0.40    | 0.35          | 0.35  | 449                              | 321     | 411           | 411   | 0.86                                  | 0.59    | 0.66          | 0.66   | 0.00                 | 0.00    | 0.07           | 11.86   |
| Cameroon                  | 0.23                       | 0.22    | 0.23          | 0.23  | 502                              | 510     | 455           | 455   | 0.53                                  | 0.52    | 0.47          | 0.47   | 0.00                 | 0.00    | -0.05          | -8.74   |
| Benin                     | 0.40                       | 0.41    | 0.42          | 0.42  | 395                              | 269     | 362           | 362   | 0.73                                  | 0.50    | 0.69          | 0.69   | 0.00                 | 0.00    | 0.19           | 38.00   |
| Chad                      | 0.26                       | 0.29    | 0.30          | 0.30  | 231                              | 203     | 250           | 250   | 0.27                                  | 0.27    | 0.35          | 0.35   | 0.00                 | 0.00    | 0.08           | 27.78   |
| Togo                      | 0.13                       | 0.10    | 0.11          | 0.11  | 383                              | 327     | 317           | 317   | 0.22                                  | 0.15    | 0.16          | 0.16   | 0.00                 | 0.00    | 0.01           | 6.67    |
| Senegal                   | 0.03                       | 0.03    | 0.03          | 0.03  | 435                              | 276     | 348           | 348   | 0.05                                  | 0.04    | 0.04          | 0.04   | 0.00                 | 0.00    | 0.00           | 5.26    |
| Egypt                     | 0.16                       | 0.10    | 0.06          | 0.06  | 728                              | 697     | 693           | 693   | 0.53                                  | 0.32    | 0.18          | 0.18   | 0.00                 | 0.00    | -0.15          | -45.31  |
| Zimbabwe                  | 0.20                       | 0.10    | 0.18          | 0.20  | 212                              | 120     | 187           | 218   | 0.20                                  | 0.06    | 0.15          | 0.20   | 0.05                 | 33.33   | 0.15           | 263.64  |
| Nigeria                   | 0.22                       | 0.24    | 0.24          | 0.24  | 203                              | 227     | 227           | 227   | 0.20                                  | 0.25    | 0.25          | 0.25   | 0.00                 | 0.00    | 0.00           | 0.00    |
| <b>Asia Oceania</b>       |                            |         |               |       |                                  |         |               |       |                                       |         |               |        |                      |         |                |         |
| China                     | 4.40                       | 3.05    | 2.85          | 2.90  | 1,484                            | 1,570   | 1,719         | 1,708 | 30.00                                 | 22.00   | 22.50         | 22.75  | 0.25                 | 1.11    | 0.75           | 3.41    |
| India                     | 12.85                      | 11.90   | 10.50         | 10.50 | 500                              | 483     | 560           | 560   | 29.50                                 | 26.40   | 27.00         | 27.00  | 0.00                 | 0.00    | 0.60           | 2.27    |
| Pakistan                  | 2.95                       | 2.80    | 2.40          | 2.40  | 782                              | 544     | 699           | 699   | 10.60                                 | 7.00    | 7.70          | 7.70   | 0.00                 | 0.00    | 0.70           | 10.00   |
| Kazakhstan                | 0.13                       | 0.10    | 0.11          | 0.11  | 408                              | 440     | 564           | 564   | 0.24                                  | 0.20    | 0.29          | 0.29   | 0.00                 | 0.00    | 0.09           | 42.50   |
| Tajikistan                | 0.18                       | 0.15    | 0.17          | 0.17  | 611                              | 599     | 515           | 515   | 0.49                                  | 0.41    | 0.39          | 0.39   | 0.00                 | 0.00    | -0.02          | -5.57   |
| Turkmenistan              | 0.55                       | 0.50    | 0.55          | 0.55  | 609                              | 631     | 529           | 529   | 1.53                                  | 1.45    | 1.33          | 1.33   | 0.00                 | 0.00    | -0.13          | -8.62   |
| Uzbekistan                | 1.29                       | 1.29    | 1.18          | 1.18  | 661                              | 644     | 655           | 669   | 3.90                                  | 3.80    | 3.55          | 3.63   | 0.08                 | 2.11    | -0.18          | -4.61   |
| Turkey                    | 0.43                       | 0.37    | 0.40          | 0.40  | 1,620                            | 1,559   | 1,742         | 1,742 | 3.20                                  | 2.65    | 3.20          | 3.20   | 0.00                 | 0.00    | 0.55           | 20.75   |
| Australia                 | 0.21                       | 0.31    | 0.55          | 0.58  | 2,443                            | 1,989   | 1,781         | 1,652 | 2.30                                  | 2.85    | 4.50          | 4.40   | -0.10                | -2.22   | 1.55           | 54.39   |
| Syria                     | 0.06                       | 0.04    | 0.04          | 0.04  | 1,089                            | 1,034   | 1,089         | 1,089 | 0.30                                  | 0.19    | 0.20          | 0.20   | 0.00                 | 0.00    | 0.01           | 5.26    |
| Burma                     | 0.30                       | 0.24    | 0.24          | 0.24  | 652                              | 656     | 662           | 662   | 0.90                                  | 0.72    | 0.73          | 0.73   | 0.00                 | 0.00    | 0.01           | 1.39    |
| <b>Europe</b>             |                            |         |               |       |                                  |         |               |       |                                       |         |               |        |                      |         |                |         |
| Greece                    | 0.28                       | 0.25    | 0.20          | 0.21  | 1,007                            | 898     | 1,034         | 1,037 | 1.29                                  | 1.01    | 0.95          | 1.00   | 0.05                 | 5.26    | -0.01          | -0.99   |
| <b>Others</b>             | 1.85                       | 1.63    | 1.55          | 1.56  | 351                              | 343     | 371           | 372   | 2.98                                  | 2.57    | 2.65          | 2.67   | 0.02                 | 0.75    | 0.11           | 4.09    |

Note: Yield for Total Foreign and Others is an incorrect calculation.

**Table 05 Cotton Supply and Distribution MY 2016/17**  
(1,000 HA and 1000 480-lb. Bales)

| Country                  | Area Harvested | Production | Imports | Total Supply | Use    | Loss | Exports | Ending Stocks |
|--------------------------|----------------|------------|---------|--------------|--------|------|---------|---------------|
| Afghanistan              | 43             | 82         | 0       | 97           | 40     | 0    | 40      | 17            |
| Albania                  | 1              | 1          | 2       | 5            | 4      | 0    | 0       | 1             |
| Algeria                  | 0              | 0          | 15      | 20           | 15     | 0    | 0       | 5             |
| Angola                   | 2              | 5          | 3       | 10           | 5      | 0    | 3       | 2             |
| Argentina                | 300            | 700        | 15      | 2,027        | 600    | 0    | 325     | 1,102         |
| Armenia                  | 0              | 0          | 0       | 0            | 0      | 0    | 0       | 0             |
| Australia                | 580            | 4,400      | 0       | 6,333        | 35     | -150 | 3,900   | 2,548         |
| Austria                  | 0              | 0          | 15      | 18           | 15     | 0    | 0       | 3             |
| Azerbaijan               | 52             | 150        | 0       | 177          | 70     | 0    | 50      | 57            |
| Bahrain                  | 0              | 0          | 50      | 58           | 50     | 0    | 0       | 8             |
| Bangladesh               | 43             | 120        | 6,200   | 7,860        | 6,500  | 10   | 0       | 1,350         |
| Belarus                  | 0              | 0          | 50      | 60           | 50     | 0    | 0       | 10            |
| Belgium-Luxembourg       | 0              | 0          | 35      | 43           | 20     | 0    | 18      | 5             |
| Benin                    | 415            | 690        | 0       | 1,038        | 15     | 0    | 725     | 298           |
| Bolivia                  | 5              | 14         | 6       | 29           | 20     | 0    | 0       | 9             |
| Brazil                   | 930            | 6,700      | 225     | 13,184       | 3,200  | -150 | 2,900   | 7,234         |
| Bulgaria                 | 2              | 10         | 35      | 54           | 45     | 0    | 0       | 9             |
| Burkina                  | 700            | 1,300      | 0       | 1,600        | 15     | 0    | 1,150   | 435           |
| Burma                    | 240            | 730        | 50      | 1,009        | 800    | 0    | 5       | 204           |
| Cambodia                 | 0              | 0          | 1       | 2            | 1      | 0    | 0       | 1             |
| Cameroon                 | 225            | 470        | 0       | 615          | 20     | 0    | 475     | 120           |
| Canada                   | 0              | 0          | 2       | 2            | 2      | 0    | 0       | 0             |
| Central African Republic | 35             | 35         | 0       | 45           | 5      | 0    | 30      | 10            |
| Chad                     | 300            | 345        | 0       | 401          | 10     | 0    | 300     | 91            |
| Chile                    | 0              | 0          | 0       | 0            | 0      | 0    | 0       | 0             |
| China                    | 2,900          | 22,750     | 4,500   | 85,448       | 36,250 | 0    | 50      | 49,148        |
| Colombia                 | 17             | 62         | 175     | 298          | 235    | 5    | 5       | 53            |
| Congo (Kinshasa)         | 30             | 15         | 2       | 21           | 17     | 0    | 0       | 4             |
| Costa Rica               | 1              | 1          | 25      | 35           | 25     | 0    | 0       | 10            |
| Cote d'Ivoire            | 350            | 660        | 0       | 730          | 30     | 0    | 575     | 125           |
| Croatia                  | 0              | 0          | 0       | 0            | 0      | 0    | 0       | 0             |
| Cuba                     | 4              | 4          | 10      | 16           | 14     | 0    | 0       | 2             |
| Cyprus                   | 0              | 0          | 0       | 0            | 0      | 0    | 0       | 0             |
| Czech Republic           | 0              | 0          | 12      | 14           | 12     | 0    | 0       | 2             |
| Denmark                  | 0              | 0          | 0       | 0            | 0      | 0    | 0       | 0             |

**Table 05 Cotton Supply and Distribution MY 2016/17 (Continued)**  
**(1,000 HA and 1000 480-lb. Bales)**

| Country            | Area Harvested | Production | Imports | Total Supply | Use    | Loss | Exports | Ending Stocks |
|--------------------|----------------|------------|---------|--------------|--------|------|---------|---------------|
| Dominican Republic | 4              | 3          | 1       | 5            | 4      | 0    | 0       | 1             |
| Ecuador            | 3              | 9          | 70      | 94           | 75     | 0    | 0       | 19            |
| Egypt              | 55             | 175        | 525     | 879          | 580    | 10   | 120     | 169           |
| El Salvador        | 1              | 1          | 165     | 211          | 165    | 0    | 0       | 46            |
| Estonia            | 0              | 0          | 10      | 12           | 10     | 0    | 0       | 2             |
| Ethiopia           | 80             | 200        | 65      | 311          | 260    | 0    | 0       | 51            |
| France             | 0              | 0          | 50      | 61           | 45     | 0    | 8       | 8             |
| Germany            | 0              | 0          | 165     | 191          | 145    | 0    | 25      | 21            |
| Ghana              | 16             | 28         | 0       | 35           | 10     | 0    | 20      | 5             |
| Greece             | 210            | 1,000      | 35      | 1,137        | 90     | 25   | 950     | 72            |
| Guatemala          | 2              | 3          | 107     | 132          | 110    | 0    | 0       | 22            |
| Guinea             | 12             | 14         | 0       | 17           | 0      | 0    | 14      | 3             |
| Haiti              | 7              | 5          | 5       | 11           | 10     | 0    | 0       | 1             |
| Honduras           | 2              | 4          | 20      | 29           | 24     | 0    | 0       | 5             |
| Hong Kong          | 0              | 0          | 0       | 0            | 0      | 0    | 0       | 0             |
| Hungary            | 0              | 0          | 4       | 4            | 0      | 0    | 3       | 1             |
| India              | 10,500         | 27,000     | 2,300   | 40,244       | 23,750 | 0    | 4,000   | 12,494        |
| Indonesia          | 3              | 5          | 3,200   | 3,733        | 3,100  | 0    | 5       | 628           |
| Iran               | 100            | 300        | 280     | 700          | 550    | 0    | 15      | 135           |
| Iraq               | 13             | 23         | 30      | 73           | 50     | 0    | 0       | 23            |
| Ireland            | 0              | 0          | 2       | 2            | 2      | 0    | 0       | 0             |
| Israel             | 8              | 65         | 2       | 105          | 4      | 0    | 80      | 21            |
| Italy              | 0              | 0          | 185     | 208          | 175    | 0    | 10      | 23            |
| Japan              | 0              | 0          | 260     | 305          | 265    | 0    | 0       | 40            |
| Kazakhstan         | 110            | 285        | 0       | 348          | 80     | 0    | 200     | 68            |
| Kenya              | 20             | 18         | 15      | 44           | 35     | 0    | 0       | 9             |
| Korea, North       | 19             | 55         | 95      | 205          | 150    | 0    | 0       | 55            |
| Korea, South       | 0              | 0          | 1,000   | 1,249        | 1,025  | 0    | 5       | 219           |
| Kyrgyzstan         | 15             | 40         | 0       | 45           | 2      | 0    | 35      | 8             |
| Latvia             | 0              | 0          | 3       | 4            | 3      | 0    | 0       | 1             |
| Lebanon            | 0              | 0          | 5       | 6            | 5      | 0    | 0       | 1             |
| Lesotho            | 0              | 0          | 65      | 85           | 65     | 0    | 0       | 20            |
| Lithuania          | 0              | 0          | 0       | 0            | 0      | 0    | 0       | 0             |
| Macedonia          | 0              | 0          | 5       | 6            | 5      | 0    | 0       | 1             |
| Madagascar         | 30             | 60         | 0       | 71           | 50     | 0    | 10      | 11            |

**Table 05 Cotton Supply and Distribution MY 2016/17 (Continued)**  
**(1,000 HA and 1000 480-lb. Bales)**

| Country      | Area Harvested | Production | Imports | Total Supply | Use    | Loss | Exports | Ending Stocks |
|--------------|----------------|------------|---------|--------------|--------|------|---------|---------------|
| Malawi       | 130            | 160        | 0       | 256          | 5      | 0    | 160     | 91            |
| Malaysia     | 0              | 0          | 360     | 487          | 250    | 0    | 150     | 87            |
| Mali         | 655            | 1,240      | 0       | 1,626        | 25     | 0    | 1,100   | 501           |
| Mauritius    | 0              | 0          | 95      | 123          | 100    | 0    | 0       | 23            |
| Mexico       | 100            | 725        | 1,075   | 2,370        | 1,725  | 25   | 100     | 520           |
| Moldova      | 0              | 0          | 45      | 57           | 45     | 0    | 0       | 12            |
| Morocco      | 1              | 1          | 50      | 64           | 50     | 0    | 0       | 14            |
| Mozambique   | 110            | 115        | 0       | 185          | 5      | 0    | 120     | 60            |
| Netherlands  | 0              | 0          | 2       | 3            | 2      | 0    | 0       | 1             |
| Nicaragua    | 4              | 10         | 0       | 12           | 1      | 0    | 9       | 2             |
| Niger        | 5              | 9          | 0       | 13           | 3      | 0    | 6       | 4             |
| Nigeria      | 240            | 250        | 50      | 379          | 240    | 0    | 60      | 79            |
| Pakistan     | 2,400          | 7,700      | 2,700   | 13,015       | 10,300 | 25   | 200     | 2,490         |
| Panama       | 0              | 0          | 0       | 0            | 0      | 0    | 0       | 0             |
| Paraguay     | 11             | 21         | 2       | 38           | 10     | 0    | 15      | 13            |
| Peru         | 13             | 60         | 260     | 445          | 325    | 0    | 5       | 115           |
| Philippines  | 1              | 2          | 45      | 60           | 47     | 0    | 0       | 13            |
| Poland       | 0              | 0          | 15      | 18           | 15     | 0    | 0       | 3             |
| Portugal     | 0              | 0          | 160     | 198          | 160    | 0    | 1       | 37            |
| Romania      | 0              | 0          | 2       | 3            | 2      | 0    | 0       | 1             |
| Russia       | 0              | 0          | 300     | 364          | 300    | 0    | 0       | 64            |
| Senegal      | 25             | 40         | 0       | 46           | 5      | 0    | 35      | 6             |
| Serbia       | 0              | 0          | 8       | 10           | 8      | 0    | 0       | 2             |
| Singapore    | 0              | 0          | 20      | 33           | 0      | 0    | 25      | 8             |
| Slovakia     | 0              | 0          | 0       | 0            | 0      | 0    | 0       | 0             |
| Slovenia     | 0              | 0          | 6       | 8            | 6      | 0    | 0       | 2             |
| Somalia      | 12             | 7          | 3       | 11           | 10     | 0    | 0       | 1             |
| South Africa | 19             | 69         | 80      | 191          | 95     | 0    | 40      | 56            |
| Spain        | 61             | 271        | 15      | 306          | 25     | 0    | 260     | 21            |
| Sri Lanka    | 5              | 5          | 8       | 17           | 13     | 0    | 0       | 4             |
| Sudan        | 50             | 130        | 0       | 229          | 85     | 0    | 60      | 84            |
| Sweden       | 0              | 0          | 0       | 0            | 0      | 0    | 0       | 0             |
| Switzerland  | 0              | 0          | 8       | 12           | 10     | 0    | 0       | 2             |
| Syria        | 40             | 200        | 0       | 264          | 75     | 0    | 135     | 54            |
| Taiwan       | 0              | 0          | 675     | 861          | 710    | 0    | 0       | 151           |

**Table 05 Cotton Supply and Distribution MY 2016/17 (Continued)**  
**(1,000 HA and 1000 480-lb. Bales)**

| <b>Country</b> | <b>Area Harvested</b> | <b>Production</b> | <b>Imports</b> | <b>Total Supply</b> | <b>Use</b> | <b>Loss</b> | <b>Exports</b> | <b>Ending Stocks</b> |
|----------------|-----------------------|-------------------|----------------|---------------------|------------|-------------|----------------|----------------------|
| Tajikistan     | 165                   | 390               | 0              | 710                 | 40         | 0           | 300            | 370                  |
| Tanzania       | 300                   | 200               | 0              | 629                 | 175        | 0           | 135            | 319                  |
| Thailand       | 1                     | 2                 | 1,300          | 1,500               | 1,275      | 25          | 1              | 199                  |
| Togo           | 110                   | 160               | 0              | 202                 | 15         | 0           | 150            | 37                   |
| Tunisia        | 2                     | 10                | 30             | 53                  | 40         | 0           | 0              | 13                   |
| Turkey         | 400                   | 3,200             | 3,250          | 8,033               | 6,300      | 0           | 275            | 1,458                |
| Turkmenistan   | 545                   | 1,325             | 0              | 2,154               | 650        | 0           | 800            | 704                  |
| Uganda         | 65                    | 90                | 0              | 160                 | 5          | 0           | 100            | 55                   |
| Ukraine        | 0                     | 0                 | 10             | 12                  | 9          | 0           | 0              | 3                    |
| United Kingdom | 0                     | 0                 | 2              | 3                   | 2          | 0           | 0              | 1                    |
| United States  | 3,853                 | 17,230            | 10             | 21,040              | 3,300      | 40          | 14,000         | 3,700                |
| Uruguay        | 0                     | 0                 | 0              | 0                   | 0          | 0           | 0              | 0                    |
| Uzbekistan     | 1,180                 | 3,625             | 0              | 4,473               | 1,700      | 0           | 1,500          | 1,273                |
| Venezuela      | 15                    | 85                | 15             | 124                 | 100        | 0           | 0              | 24                   |
| Vietnam        | 1                     | 3                 | 5,400          | 6,182               | 5,300      | 0           | 0              | 882                  |
| Yemen          | 18                    | 32                | 0              | 38                  | 30         | 0           | 1              | 7                    |
| Zambia         | 210                   | 200               | 0              | 403                 | 5          | 0           | 215            | 183                  |
| Zimbabwe       | 200                   | 200               | 0              | 249                 | 30         | 15          | 90             | 114                  |
| <b>World</b>   |                       |                   |                |                     |            |             |                |                      |
| World          | 29,332                | 106,304           | 36,098         | 239,480             | 112,592    | -120        | 36,099         | 90,909               |

**Table 05A Cotton Supply and Distribution MY 2016/2017**  
(1000 MT and 1000 HA)

| Country                  | Area Harvested | Production | Imports | Total Supply | Use   | Loss | Exports | Ending Stocks |
|--------------------------|----------------|------------|---------|--------------|-------|------|---------|---------------|
| Afghanistan              | 9              | 18         | 0       | 21           | 9     | 0    | 9       | 4             |
| Albania                  | 0              | 0          | 0       | 1            | 1     | 0    | 0       | 0             |
| Algeria                  | 0              | 0          | 3       | 4            | 3     | 0    | 0       | 1             |
| Angola                   | 0              | 1          | 1       | 2            | 1     | 0    | 1       | 0             |
| Argentina                | 65             | 152        | 3       | 441          | 131   | 0    | 71      | 240           |
| Armenia                  | 0              | 0          | 0       | 0            | 0     | 0    | 0       | 0             |
| Australia                | 126            | 958        | 0       | 1,379        | 8     | -33  | 849     | 555           |
| Austria                  | 0              | 0          | 3       | 4            | 3     | 0    | 0       | 1             |
| Azerbaijan               | 11             | 33         | 0       | 39           | 15    | 0    | 11      | 12            |
| Bahrain                  | 0              | 0          | 11      | 13           | 11    | 0    | 0       | 2             |
| Bangladesh               | 9              | 26         | 1,350   | 1,711        | 1,415 | 2    | 0       | 294           |
| Belarus                  | 0              | 0          | 11      | 13           | 11    | 0    | 0       | 2             |
| Belgium-Luxembourg       | 0              | 0          | 8       | 9            | 4     | 0    | 4       | 1             |
| Benin                    | 90             | 150        | 0       | 226          | 3     | 0    | 158     | 65            |
| Bolivia                  | 1              | 3          | 1       | 6            | 4     | 0    | 0       | 2             |
| Brazil                   | 202            | 1,459      | 49      | 2,871        | 697   | -33  | 631     | 1,575         |
| Bulgaria                 | 0              | 2          | 8       | 12           | 10    | 0    | 0       | 2             |
| Burkina                  | 152            | 283        | 0       | 348          | 3     | 0    | 250     | 95            |
| Burma                    | 52             | 159        | 11      | 220          | 174   | 0    | 1       | 44            |
| Cambodia                 | 0              | 0          | 0       | 0            | 0     | 0    | 0       | 0             |
| Cameroon                 | 49             | 102        | 0       | 134          | 4     | 0    | 103     | 26            |
| Canada                   | 0              | 0          | 0       | 0            | 0     | 0    | 0       | 0             |
| Central African Republic | 8              | 8          | 0       | 10           | 1     | 0    | 7       | 2             |
| Chad                     | 65             | 75         | 0       | 87           | 2     | 0    | 65      | 20            |
| Chile                    | 0              | 0          | 0       | 0            | 0     | 0    | 0       | 0             |
| China                    | 631            | 4,953      | 980     | 18,604       | 7,893 | 0    | 11      | 10,701        |
| Colombia                 | 4              | 13         | 38      | 65           | 51    | 1    | 1       | 12            |
| Congo (Kinshasa)         | 7              | 3          | 0       | 5            | 4     | 0    | 0       | 1             |
| Costa Rica               | 0              | 0          | 5       | 8            | 5     | 0    | 0       | 2             |
| Cote d'Ivoire            | 76             | 144        | 0       | 159          | 7     | 0    | 125     | 27            |
| Croatia                  | 0              | 0          | 0       | 0            | 0     | 0    | 0       | 0             |
| Cuba                     | 1              | 1          | 2       | 3            | 3     | 0    | 0       | 0             |
| Cyprus                   | 0              | 0          | 0       | 0            | 0     | 0    | 0       | 0             |
| Czech Republic           | 0              | 0          | 3       | 3            | 3     | 0    | 0       | 0             |
| Denmark                  | 0              | 0          | 0       | 0            | 0     | 0    | 0       | 0             |

**Table 05A Cotton Supply and Distribution MY 2016/2017 (Continued)**  
(1000 MT and 1000 HA)

| Country            | Area Harvested | Production | Imports | Total Supply | Use   | Loss | Exports | Ending Stocks |
|--------------------|----------------|------------|---------|--------------|-------|------|---------|---------------|
| Dominican Republic | 1              | 1          | 0       | 1            | 1     | 0    | 0       | 0             |
| Ecuador            | 1              | 2          | 15      | 20           | 16    | 0    | 0       | 4             |
| Egypt              | 12             | 38         | 114     | 191          | 126   | 2    | 26      | 37            |
| El Salvador        | 0              | 0          | 36      | 46           | 36    | 0    | 0       | 10            |
| Estonia            | 0              | 0          | 2       | 3            | 2     | 0    | 0       | 0             |
| Ethiopia           | 17             | 44         | 14      | 68           | 57    | 0    | 0       | 11            |
| France             | 0              | 0          | 11      | 13           | 10    | 0    | 2       | 2             |
| Germany            | 0              | 0          | 36      | 42           | 32    | 0    | 5       | 5             |
| Ghana              | 3              | 6          | 0       | 8            | 2     | 0    | 4       | 1             |
| Greece             | 46             | 218        | 8       | 248          | 20    | 5    | 207     | 16            |
| Guatemala          | 0              | 1          | 23      | 29           | 24    | 0    | 0       | 5             |
| Guinea             | 3              | 3          | 0       | 4            | 0     | 0    | 3       | 1             |
| Haiti              | 2              | 1          | 1       | 2            | 2     | 0    | 0       | 0             |
| Honduras           | 0              | 1          | 4       | 6            | 5     | 0    | 0       | 1             |
| Hong Kong          | 0              | 0          | 0       | 0            | 0     | 0    | 0       | 0             |
| Hungary            | 0              | 0          | 1       | 1            | 0     | 0    | 1       | 0             |
| India              | 2,286          | 5,879      | 501     | 8,762        | 5,171 | 0    | 871     | 2,720         |
| Indonesia          | 1              | 1          | 697     | 813          | 675   | 0    | 1       | 137           |
| Iran               | 22             | 65         | 61      | 152          | 120   | 0    | 3       | 29            |
| Iraq               | 3              | 5          | 7       | 16           | 11    | 0    | 0       | 5             |
| Ireland            | 0              | 0          | 0       | 0            | 0     | 0    | 0       | 0             |
| Israel             | 2              | 14         | 0       | 23           | 1     | 0    | 17      | 5             |
| Italy              | 0              | 0          | 40      | 45           | 38    | 0    | 2       | 5             |
| Japan              | 0              | 0          | 57      | 66           | 58    | 0    | 0       | 9             |
| Kazakhstan         | 24             | 62         | 0       | 76           | 17    | 0    | 44      | 15            |
| Kenya              | 4              | 4          | 3       | 10           | 8     | 0    | 0       | 2             |
| Korea, North       | 4              | 12         | 21      | 45           | 33    | 0    | 0       | 12            |
| Korea, South       | 0              | 0          | 218     | 272          | 223   | 0    | 1       | 48            |
| Kyrgyzstan         | 3              | 9          | 0       | 10           | 0     | 0    | 8       | 2             |
| Latvia             | 0              | 0          | 1       | 1            | 1     | 0    | 0       | 0             |
| Lebanon            | 0              | 0          | 1       | 1            | 1     | 0    | 0       | 0             |
| Lesotho            | 0              | 0          | 14      | 19           | 14    | 0    | 0       | 4             |
| Lithuania          | 0              | 0          | 0       | 0            | 0     | 0    | 0       | 0             |
| Macedonia          | 0              | 0          | 1       | 1            | 1     | 0    | 0       | 0             |
| Madagascar         | 7              | 13         | 0       | 15           | 11    | 0    | 2       | 2             |



**Table 05A Cotton Supply and Distribution MY 2016/2017 (Continued)**  
(1000 MT and 1000 HA)

| Country      | Area Harvested | Production | Imports | Total Supply | Use   | Loss | Exports | Ending Stocks |
|--------------|----------------|------------|---------|--------------|-------|------|---------|---------------|
| Malawi       | 28             | 35         | 0       | 56           | 1     | 0    | 35      | 20            |
| Malaysia     | 0              | 0          | 78      | 106          | 54    | 0    | 33      | 19            |
| Mali         | 143            | 270        | 0       | 354          | 5     | 0    | 239     | 109           |
| Mauritius    | 0              | 0          | 21      | 27           | 22    | 0    | 0       | 5             |
| Mexico       | 22             | 158        | 234     | 516          | 376   | 5    | 22      | 113           |
| Moldova      | 0              | 0          | 10      | 12           | 10    | 0    | 0       | 3             |
| Morocco      | 0              | 0          | 11      | 14           | 11    | 0    | 0       | 3             |
| Mozambique   | 24             | 25         | 0       | 40           | 1     | 0    | 26      | 13            |
| Netherlands  | 0              | 0          | 0       | 1            | 0     | 0    | 0       | 0             |
| Nicaragua    | 1              | 2          | 0       | 3            | 0     | 0    | 2       | 0             |
| Niger        | 1              | 2          | 0       | 3            | 1     | 0    | 1       | 1             |
| Nigeria      | 52             | 54         | 11      | 83           | 52    | 0    | 13      | 17            |
| Pakistan     | 523            | 1,676      | 588     | 2,834        | 2,243 | 5    | 44      | 542           |
| Panama       | 0              | 0          | 0       | 0            | 0     | 0    | 0       | 0             |
| Paraguay     | 2              | 5          | 0       | 8            | 2     | 0    | 3       | 3             |
| Peru         | 3              | 13         | 57      | 97           | 71    | 0    | 1       | 25            |
| Philippines  | 0              | 0          | 10      | 13           | 10    | 0    | 0       | 3             |
| Poland       | 0              | 0          | 3       | 4            | 3     | 0    | 0       | 1             |
| Portugal     | 0              | 0          | 35      | 43           | 35    | 0    | 0       | 8             |
| Romania      | 0              | 0          | 0       | 1            | 0     | 0    | 0       | 0             |
| Russia       | 0              | 0          | 65      | 79           | 65    | 0    | 0       | 14            |
| Senegal      | 5              | 9          | 0       | 10           | 1     | 0    | 8       | 1             |
| Serbia       | 0              | 0          | 2       | 2            | 2     | 0    | 0       | 0             |
| Singapore    | 0              | 0          | 4       | 7            | 0     | 0    | 5       | 2             |
| Slovakia     | 0              | 0          | 0       | 0            | 0     | 0    | 0       | 0             |
| Slovenia     | 0              | 0          | 1       | 2            | 1     | 0    | 0       | 0             |
| Somalia      | 3              | 2          | 1       | 2            | 2     | 0    | 0       | 0             |
| South Africa | 4              | 15         | 17      | 42           | 21    | 0    | 9       | 12            |
| Spain        | 13             | 59         | 3       | 67           | 5     | 0    | 57      | 5             |
| Sri Lanka    | 1              | 1          | 2       | 4            | 3     | 0    | 0       | 1             |
| Sudan        | 11             | 28         | 0       | 50           | 19    | 0    | 13      | 18            |
| Sweden       | 0              | 0          | 0       | 0            | 0     | 0    | 0       | 0             |
| Switzerland  | 0              | 0          | 2       | 3            | 2     | 0    | 0       | 0             |
| Syria        | 9              | 44         | 0       | 57           | 16    | 0    | 29      | 12            |
| Taiwan       | 0              | 0          | 147     | 187          | 155   | 0    | 0       | 33            |

**Table 05A Cotton Supply and Distribution MY 2016/2017 (Continued)**  
(1000 MT and 1000 HA)

| Country        | Area Harvested | Production | Imports | Total Supply | Use    | Loss | Exports | Ending Stocks |
|----------------|----------------|------------|---------|--------------|--------|------|---------|---------------|
| Tajikistan     | 36             | 85         | 0       | 155          | 9      | 0    | 65      | 81            |
| Tanzania       | 65             | 44         | 0       | 137          | 38     | 0    | 29      | 69            |
| Thailand       | 0              | 0          | 283     | 327          | 278    | 5    | 0       | 43            |
| Togo           | 24             | 35         | 0       | 44           | 3      | 0    | 33      | 8             |
| Tunisia        | 0              | 2          | 7       | 12           | 9      | 0    | 0       | 3             |
| Turkey         | 87             | 697        | 708     | 1,749        | 1,372  | 0    | 60      | 317           |
| Turkmenistan   | 119            | 288        | 0       | 469          | 142    | 0    | 174     | 153           |
| Uganda         | 14             | 20         | 0       | 35           | 1      | 0    | 22      | 12            |
| Ukraine        | 0              | 0          | 2       | 3            | 2      | 0    | 0       | 1             |
| United Kingdom | 0              | 0          | 0       | 1            | 0      | 0    | 0       | 0             |
| United States  | 839            | 3,751      | 2       | 4,581        | 718    | 9    | 3,048   | 806           |
| Uruguay        | 0              | 0          | 0       | 0            | 0      | 0    | 0       | 0             |
| Uzbekistan     | 257            | 789        | 0       | 974          | 370    | 0    | 327     | 277           |
| Venezuela      | 3              | 19         | 3       | 27           | 22     | 0    | 0       | 5             |
| Vietnam        | 0              | 1          | 1,176   | 1,346        | 1,154  | 0    | 0       | 192           |
| Yemen          | 4              | 7          | 0       | 8            | 7      | 0    | 0       | 2             |
| Zambia         | 46             | 44         | 0       | 88           | 1      | 0    | 47      | 40            |
| Zimbabwe       | 44             | 44         | 0       | 54           | 7      | 3    | 20      | 25            |
| <b>World</b>   |                |            |         |              |        |      |         |               |
| World          | 6,386          | 23,145     | 7,859   | 52,141       | 24,514 | -26  | 7,860   | 19,793        |

**Table 06: Cotton Supply and Distribution by Country 2015/2016**  
(1,000 HA and 1000 480-lb. Bales)

| Country                  | Area Harvested | Production | Imports | Total Supply | Use    | Loss | Exports | Ending Stocks |
|--------------------------|----------------|------------|---------|--------------|--------|------|---------|---------------|
| Afghanistan              | 45             | 87         | 0       | 105          | 50     | 0    | 40      | 15            |
| Albania                  | 1              | 1          | 5       | 10           | 8      | 0    | 0       | 2             |
| Algeria                  | 0              | 0          | 14      | 20           | 15     | 0    | 0       | 5             |
| Angola                   | 2              | 5          | 3       | 10           | 5      | 0    | 3       | 2             |
| Argentina                | 375            | 825        | 17      | 2,139        | 600    | 0    | 227     | 1,312         |
| Armenia                  | 0              | 0          | 0       | 0            | 0      | 0    | 0       | 0             |
| Australia                | 312            | 2,850      | 0       | 4,668        | 35     | -150 | 2,850   | 1,933         |
| Austria                  | 0              | 0          | 18      | 21           | 15     | 0    | 3       | 3             |
| Azerbaijan               | 23             | 70         | 0       | 113          | 60     | 0    | 26      | 27            |
| Bahrain                  | 0              | 0          | 50      | 58           | 50     | 0    | 0       | 8             |
| Bangladesh               | 43             | 119        | 6,200   | 7,650        | 6,100  | 10   | 0       | 1,540         |
| Belarus                  | 0              | 0          | 50      | 60           | 50     | 0    | 0       | 10            |
| Belgium-Luxembourg       | 0              | 0          | 49      | 58           | 32     | 0    | 18      | 8             |
| Benin                    | 405            | 500        | 0       | 1,088        | 15     | 0    | 725     | 348           |
| Bolivia                  | 5              | 14         | 4       | 30           | 20     | 0    | 1       | 9             |
| Brazil                   | 955            | 5,900      | 91      | 13,523       | 3,100  | -150 | 4,314   | 6,259         |
| Bulgaria                 | 2              | 10         | 23      | 41           | 32     | 0    | 0       | 9             |
| Burkina                  | 660            | 1,100      | 0       | 1,615        | 15     | 0    | 1,300   | 300           |
| Burma                    | 239            | 720        | 50      | 1,034        | 800    | 0    | 5       | 229           |
| Cambodia                 | 0              | 0          | 1       | 2            | 1      | 0    | 0       | 1             |
| Cameroon                 | 220            | 515        | 0       | 715          | 20     | 0    | 550     | 145           |
| Canada                   | 0              | 0          | 2       | 2            | 2      | 0    | 0       | 0             |
| Central African Republic | 34             | 30         | 0       | 43           | 5      | 0    | 28      | 10            |
| Chad                     | 290            | 270        | 0       | 346          | 10     | 0    | 280     | 56            |
| Chile                    | 0              | 0          | 0       | 0            | 0      | 0    | 0       | 0             |
| China                    | 3,050          | 22,000     | 4,406   | 93,326       | 35,000 | 0    | 128     | 58,198        |
| Colombia                 | 31             | 80         | 178     | 314          | 245    | 5    | 3       | 61            |
| Congo (Kinshasa)         | 30             | 15         | 2       | 21           | 17     | 0    | 0       | 4             |
| Costa Rica               | 1              | 1          | 25      | 29           | 20     | 0    | 0       | 9             |
| Cote d'Ivoire            | 400            | 590        | 0       | 875          | 30     | 0    | 775     | 70            |
| Croatia                  | 0              | 0          | 0       | 0            | 0      | 0    | 0       | 0             |
| Cuba                     | 4              | 4          | 10      | 16           | 14     | 0    | 0       | 2             |
| Cyprus                   | 0              | 0          | 0       | 0            | 0      | 0    | 0       | 0             |
| Czech Republic           | 0              | 0          | 12      | 15           | 13     | 0    | 0       | 2             |
| Denmark                  | 0              | 0          | 0       | 0            | 0      | 0    | 0       | 0             |

**Table 06: Cotton Supply and Distribution by Country 2015/2016 (Continued)**  
**(1,000 HA and 1000 480-lb. Bales)**

| Country            | Area Harvested | Production | Imports | Total Supply | Use    | Loss | Exports | Ending Stocks |
|--------------------|----------------|------------|---------|--------------|--------|------|---------|---------------|
| Dominican Republic | 4              | 3          | 1       | 5            | 4      | 0    | 0       | 1             |
| Ecuador            | 3              | 9          | 64      | 90           | 75     | 0    | 0       | 15            |
| Egypt              | 100            | 320        | 450     | 959          | 620    | 10   | 150     | 179           |
| El Salvador        | 1              | 1          | 167     | 210          | 165    | 0    | 0       | 45            |
| Estonia            | 0              | 0          | 10      | 10           | 8      | 0    | 0       | 2             |
| Ethiopia           | 65             | 175        | 45      | 276          | 230    | 0    | 0       | 46            |
| France             | 0              | 0          | 56      | 71           | 45     | 0    | 15      | 11            |
| Germany            | 0              | 0          | 202     | 231          | 175    | 0    | 30      | 26            |
| Ghana              | 16             | 28         | 0       | 32           | 10     | 0    | 15      | 7             |
| Greece             | 245            | 1,010      | 28      | 1,206        | 95     | 50   | 959     | 102           |
| Guatemala          | 2              | 3          | 106     | 132          | 110    | 0    | 0       | 22            |
| Guinea             | 12             | 14         | 0       | 17           | 0      | 0    | 14      | 3             |
| Haiti              | 7              | 5          | 5       | 11           | 10     | 0    | 0       | 1             |
| Honduras           | 2              | 4          | 20      | 29           | 24     | 0    | 0       | 5             |
| Hong Kong          | 0              | 0          | 2       | 2            | 0      | 0    | 2       | 0             |
| Hungary            | 0              | 0          | 3       | 4            | 0      | 0    | 4       | 0             |
| India              | 11,900         | 26,400     | 1,072   | 40,958       | 24,250 | 0    | 5,764   | 10,944        |
| Indonesia          | 3              | 5          | 2,941   | 3,543        | 3,000  | 0    | 15      | 528           |
| Iran               | 100            | 275        | 250     | 660          | 525    | 0    | 15      | 120           |
| Iraq               | 20             | 30         | 30      | 80           | 60     | 0    | 0       | 20            |
| Ireland            | 0              | 0          | 2       | 2            | 2      | 0    | 0       | 0             |
| Israel             | 9              | 73         | 2       | 102          | 4      | 0    | 60      | 38            |
| Italy              | 0              | 0          | 182     | 208          | 175    | 0    | 10      | 23            |
| Japan              | 0              | 0          | 310     | 350          | 305    | 0    | 0       | 45            |
| Kazakhstan         | 99             | 200        | 0       | 353          | 100    | 0    | 190     | 63            |
| Kenya              | 21             | 18         | 15      | 46           | 35     | 0    | 0       | 11            |
| Korea, North       | 19             | 55         | 95      | 205          | 150    | 0    | 0       | 55            |
| Korea, South       | 0              | 0          | 1,175   | 1,479        | 1,225  | 0    | 5       | 249           |
| Kyrgyzstan         | 15             | 40         | 0       | 47           | 2      | 0    | 40      | 5             |
| Latvia             | 0              | 0          | 3       | 4            | 3      | 0    | 0       | 1             |
| Lebanon            | 0              | 0          | 4       | 5            | 4      | 0    | 0       | 1             |
| Lesotho            | 0              | 0          | 65      | 80           | 60     | 0    | 0       | 20            |
| Lithuania          | 0              | 0          | 0       | 0            | 0      | 0    | 0       | 0             |
| Macedonia          | 0              | 0          | 5       | 6            | 5      | 0    | 0       | 1             |
| Madagascar         | 30             | 60         | 0       | 71           | 50     | 0    | 10      | 11            |

**Table 06: Cotton Supply and Distribution by Country 2015/2016 (Continued)**  
**(1,000 HA and 1000 480-lb. Bales)**

| Country      | Area Harvested | Production | Imports | Total Supply | Use    | Loss | Exports | Ending Stocks |
|--------------|----------------|------------|---------|--------------|--------|------|---------|---------------|
| Malawi       | 125            | 150        | 0       | 281          | 5      | 0    | 180     | 96            |
| Malaysia     | 0              | 0          | 443     | 489          | 220    | 0    | 142     | 127           |
| Mali         | 545            | 975        | 0       | 1,411        | 25     | 0    | 1,000   | 386           |
| Mauritius    | 0              | 0          | 129     | 148          | 120    | 0    | 0       | 28            |
| Mexico       | 130            | 908        | 975     | 2,576        | 1,850  | 25   | 131     | 570           |
| Moldova      | 0              | 0          | 35      | 47           | 35     | 0    | 0       | 12            |
| Morocco      | 1              | 1          | 46      | 81           | 68     | 0    | 0       | 13            |
| Mozambique   | 110            | 90         | 0       | 175          | 5      | 0    | 100     | 70            |
| Netherlands  | 0              | 0          | 1       | 3            | 2      | 0    | 0       | 1             |
| Nicaragua    | 4              | 10         | 0       | 12           | 1      | 0    | 9       | 2             |
| Niger        | 5              | 9          | 0       | 13           | 4      | 0    | 5       | 4             |
| Nigeria      | 240            | 250        | 50      | 379          | 240    | 0    | 60      | 79            |
| Pakistan     | 2,800          | 7,000      | 3,300   | 13,190       | 10,300 | 25   | 250     | 2,615         |
| Panama       | 0              | 0          | 0       | 0            | 0      | 0    | 0       | 0             |
| Paraguay     | 13             | 25         | 2       | 45           | 10     | 0    | 20      | 15            |
| Peru         | 16             | 75         | 210     | 478          | 350    | 0    | 3       | 125           |
| Philippines  | 1              | 2          | 47      | 60           | 47     | 0    | 0       | 13            |
| Poland       | 0              | 0          | 15      | 18           | 15     | 0    | 0       | 3             |
| Portugal     | 0              | 0          | 171     | 210          | 170    | 0    | 2       | 38            |
| Romania      | 0              | 0          | 2       | 3            | 2      | 0    | 0       | 1             |
| Russia       | 0              | 0          | 290     | 364          | 300    | 0    | 0       | 64            |
| Senegal      | 30             | 38         | 0       | 46           | 5      | 0    | 35      | 6             |
| Serbia       | 0              | 0          | 8       | 10           | 8      | 0    | 0       | 2             |
| Singapore    | 0              | 0          | 40      | 43           | 0      | 0    | 30      | 13            |
| Slovakia     | 0              | 0          | 0       | 0            | 0      | 0    | 0       | 0             |
| Slovenia     | 0              | 0          | 6       | 8            | 6      | 0    | 0       | 2             |
| Somalia      | 12             | 7          | 3       | 11           | 10     | 0    | 0       | 1             |
| South Africa | 9              | 46         | 75      | 210          | 96     | 6    | 66      | 42            |
| Spain        | 63             | 261        | 14      | 309          | 25     | 0    | 264     | 20            |
| Sri Lanka    | 5              | 5          | 8       | 17           | 13     | 0    | 0       | 4             |
| Sudan        | 50             | 130        | 0       | 264          | 85     | 0    | 80      | 99            |
| Sweden       | 0              | 0          | 0       | 0            | 0      | 0    | 0       | 0             |
| Switzerland  | 0              | 0          | 16      | 19           | 15     | 0    | 0       | 4             |
| Syria        | 40             | 190        | 0       | 284          | 120    | 0    | 100     | 64            |
| Taiwan       | 0              | 0          | 707     | 921          | 735    | 0    | 0       | 186           |

**Table 06: Cotton Supply and Distribution by Country 2015/2016 (Continued)**  
**(1,000 HA and 1000 480-lb. Bales)**

| Country        | Area Harvested | Production | Imports | Total Supply | Use     | Loss | Exports | Ending Stocks |
|----------------|----------------|------------|---------|--------------|---------|------|---------|---------------|
| Tajikistan     | 150            | 413        | 0       | 790          | 20      | 0    | 450     | 320           |
| Tanzania       | 400            | 270        | 0       | 689          | 175     | 0    | 85      | 429           |
| Thailand       | 1              | 2          | 1,275   | 1,494        | 1,270   | 25   | 1       | 198           |
| Togo           | 100            | 150        | 0       | 222          | 15      | 0    | 165     | 42            |
| Tunisia        | 2              | 10         | 30      | 53           | 40      | 0    | 0       | 13            |
| Turkey         | 370            | 2,650      | 4,218   | 8,464        | 6,650   | 0    | 231     | 1,583         |
| Turkmenistan   | 500            | 1,450      | 0       | 2,729        | 650     | 0    | 1,250   | 829           |
| Uganda         | 65             | 92         | 0       | 155          | 5       | 0    | 80      | 70            |
| Ukraine        | 0              | 0          | 8       | 11           | 9       | 0    | 0       | 2             |
| United Kingdom | 0              | 0          | 2       | 3            | 0       | 0    | 2       | 1             |
| United States  | 3,268          | 12,888     | 33      | 16,571       | 3,450   | 168  | 9,153   | 3,800         |
| Uruguay        | 0              | 0          | 0       | 0            | 0       | 0    | 0       | 0             |
| Uzbekistan     | 1,285          | 3,800      | 0       | 4,948        | 1,600   | 0    | 2,500   | 848           |
| Venezuela      | 15             | 85         | 15      | 124          | 100     | 0    | 0       | 24            |
| Vietnam        | 1              | 3          | 4,500   | 5,179        | 4,400   | 0    | 0       | 779           |
| Yemen          | 18             | 32         | 0       | 37           | 30      | 0    | 1       | 6             |
| Zambia         | 225            | 207        | 0       | 403          | 5       | 0    | 195     | 203           |
| Zimbabwe       | 100            | 55         | 0       | 219          | 30      | 15   | 125     | 49            |
| <b>World</b>   |                |            |         |              |         |      |         |               |
| World          | 30,499         | 96,713     | 35,194  | 243,647      | 111,241 | 39   | 35,289  | 97,078        |

**Table 06A: Cotton Supply and Distribution by Country 2015/2016**  
(1,000 Metric Tons)

| Country                  | Area Harvested | Beginning Stocks | Production | Imports | Use   | Loss | Exports | Ending Stocks |
|--------------------------|----------------|------------------|------------|---------|-------|------|---------|---------------|
| Afghanistan              | 10             | 4                | 19         | 0       | 11    | 0    | 9       | 3             |
| Albania                  | 0              | 1                | 0          | 1       | 2     | 0    | 0       | 0             |
| Algeria                  | 0              | 1                | 0          | 3       | 3     | 0    | 0       | 1             |
| Angola                   | 0              | 0                | 1          | 1       | 1     | 0    | 1       | 0             |
| Argentina                | 82             | 282              | 180        | 4       | 131   | 0    | 49      | 286           |
| Armenia                  | 0              | 0                | 0          | 0       | 0     | 0    | 0       | 0             |
| Australia                | 68             | 396              | 621        | 0       | 8     | -33  | 621     | 421           |
| Austria                  | 0              | 1                | 0          | 4       | 3     | 0    | 1       | 1             |
| Azerbaijan               | 5              | 9                | 15         | 0       | 13    | 0    | 6       | 6             |
| Bahrain                  | 0              | 2                | 0          | 11      | 11    | 0    | 0       | 2             |
| Bangladesh               | 9              | 290              | 26         | 1,350   | 1,328 | 2    | 0       | 335           |
| Belarus                  | 0              | 2                | 0          | 11      | 11    | 0    | 0       | 2             |
| Belgium-Luxembourg       | 0              | 2                | 0          | 11      | 7     | 0    | 4       | 2             |
| Benin                    | 88             | 128              | 109        | 0       | 3     | 0    | 158     | 76            |
| Bolivia                  | 1              | 3                | 3          | 1       | 4     | 0    | 0       | 2             |
| Brazil                   | 208            | 1,640            | 1,285      | 20      | 675   | -33  | 939     | 1,363         |
| Bulgaria                 | 0              | 2                | 2          | 5       | 7     | 0    | 0       | 2             |
| Burkina                  | 144            | 112              | 239        | 0       | 3     | 0    | 283     | 65            |
| Burma                    | 52             | 57               | 157        | 11      | 174   | 0    | 1       | 50            |
| Cambodia                 | 0              | 0                | 0          | 0       | 0     | 0    | 0       | 0             |
| Cameroon                 | 48             | 44               | 112        | 0       | 4     | 0    | 120     | 32            |
| Canada                   | 0              | 0                | 0          | 0       | 0     | 0    | 0       | 0             |
| Central African Republic | 7              | 3                | 7          | 0       | 1     | 0    | 6       | 2             |
| Chad                     | 63             | 17               | 59         | 0       | 2     | 0    | 61      | 12            |
| Chile                    | 0              | 0                | 0          | 0       | 0     | 0    | 0       | 0             |
| China                    | 664            | 14,570           | 4,790      | 959     | 7,620 | 0    | 28      | 12,671        |
| Colombia                 | 7              | 12               | 17         | 39      | 53    | 1    | 1       | 13            |
| Congo (Kinshasa)         | 7              | 1                | 3          | 0       | 4     | 0    | 0       | 1             |
| Costa Rica               | 0              | 1                | 0          | 5       | 4     | 0    | 0       | 2             |
| Cote d'Ivoire            | 87             | 62               | 128        | 0       | 7     | 0    | 169     | 15            |
| Croatia                  | 0              | 0                | 0          | 0       | 0     | 0    | 0       | 0             |
| Cuba                     | 1              | 0                | 1          | 2       | 3     | 0    | 0       | 0             |
| Cyprus                   | 0              | 0                | 0          | 0       | 0     | 0    | 0       | 0             |
| Czech Republic           | 0              | 1                | 0          | 3       | 3     | 0    | 0       | 0             |
| Denmark                  | 0              | 0                | 0          | 0       | 0     | 0    | 0       | 0             |

**Table 06A: Cotton Supply and Distribution by Country 2015/2016 (Continued)**  
(1,000 Metric Tons)

| Country            | Area Harvested | Beginning Stocks | Production | Imports | Use   | Loss | Exports | Ending Stocks |
|--------------------|----------------|------------------|------------|---------|-------|------|---------|---------------|
| Dominican Republic | 1              | 0                | 1          | 0       | 1     | 0    | 0       | 0             |
| Ecuador            | 1              | 4                | 2          | 14      | 16    | 0    | 0       | 3             |
| Egypt              | 22             | 41               | 70         | 98      | 135   | 2    | 33      | 39            |
| El Salvador        | 0              | 9                | 0          | 36      | 36    | 0    | 0       | 10            |
| Estonia            | 0              | 0                | 0          | 2       | 2     | 0    | 0       | 0             |
| Ethiopia           | 14             | 12               | 38         | 10      | 50    | 0    | 0       | 10            |
| France             | 0              | 3                | 0          | 12      | 10    | 0    | 3       | 2             |
| Germany            | 0              | 6                | 0          | 44      | 38    | 0    | 7       | 6             |
| Ghana              | 3              | 1                | 6          | 0       | 2     | 0    | 3       | 2             |
| Greece             | 53             | 37               | 220        | 6       | 21    | 11   | 209     | 22            |
| Guatemala          | 0              | 5                | 1          | 23      | 24    | 0    | 0       | 5             |
| Guinea             | 3              | 1                | 3          | 0       | 0     | 0    | 3       | 1             |
| Haiti              | 2              | 0                | 1          | 1       | 2     | 0    | 0       | 0             |
| Honduras           | 0              | 1                | 1          | 4       | 5     | 0    | 0       | 1             |
| Hong Kong          | 0              | 0                | 0          | 0       | 0     | 0    | 0       | 0             |
| Hungary            | 0              | 0                | 0          | 1       | 0     | 0    | 1       | 0             |
| India              | 2,591          | 2,936            | 5,748      | 233     | 5,280 | 0    | 1,255   | 2,383         |
| Indonesia          | 1              | 130              | 1          | 640     | 653   | 0    | 3       | 115           |
| Iran               | 22             | 29               | 60         | 54      | 114   | 0    | 3       | 26            |
| Iraq               | 4              | 4                | 7          | 7       | 13    | 0    | 0       | 4             |
| Ireland            | 0              | 0                | 0          | 0       | 0     | 0    | 0       | 0             |
| Israel             | 2              | 6                | 16         | 0       | 1     | 0    | 13      | 8             |
| Italy              | 0              | 6                | 0          | 40      | 38    | 0    | 2       | 5             |
| Japan              | 0              | 9                | 0          | 67      | 66    | 0    | 0       | 10            |
| Kazakhstan         | 22             | 33               | 44         | 0       | 22    | 0    | 41      | 14            |
| Kenya              | 5              | 3                | 4          | 3       | 8     | 0    | 0       | 2             |
| Korea, North       | 4              | 12               | 12         | 21      | 33    | 0    | 0       | 12            |
| Korea, South       | 0              | 66               | 0          | 256     | 267   | 0    | 1       | 54            |
| Kyrgyzstan         | 3              | 2                | 9          | 0       | 0     | 0    | 9       | 1             |
| Latvia             | 0              | 0                | 0          | 1       | 1     | 0    | 0       | 0             |
| Lebanon            | 0              | 0                | 0          | 1       | 1     | 0    | 0       | 0             |
| Lesotho            | 0              | 3                | 0          | 14      | 13    | 0    | 0       | 4             |
| Lithuania          | 0              | 0                | 0          | 0       | 0     | 0    | 0       | 0             |
| Macedonia          | 0              | 0                | 0          | 1       | 1     | 0    | 0       | 0             |
| Madagascar         | 7              | 2                | 13         | 0       | 11    | 0    | 2       | 2             |



**Table 06A: Cotton Supply and Distribution by Country 2015/2016 (Continued)**  
(1,000 Metric Tons)

| Country      | Area Harvested | Beginning Stocks | Production | Imports | Use   | Loss | Exports | Ending Stocks |
|--------------|----------------|------------------|------------|---------|-------|------|---------|---------------|
| Malawi       | 27             | 29               | 33         | 0       | 1     | 0    | 39      | 21            |
| Malaysia     | 0              | 10               | 0          | 96      | 48    | 0    | 31      | 28            |
| Mali         | 119            | 95               | 212        | 0       | 5     | 0    | 218     | 84            |
| Mauritius    | 0              | 4                | 0          | 28      | 26    | 0    | 0       | 6             |
| Mexico       | 28             | 151              | 198        | 212     | 403   | 5    | 29      | 124           |
| Moldova      | 0              | 3                | 0          | 8       | 8     | 0    | 0       | 3             |
| Morocco      | 0              | 7                | 0          | 10      | 15    | 0    | 0       | 3             |
| Mozambique   | 24             | 19               | 20         | 0       | 1     | 0    | 22      | 15            |
| Netherlands  | 0              | 0                | 0          | 0       | 0     | 0    | 0       | 0             |
| Nicaragua    | 1              | 0                | 2          | 0       | 0     | 0    | 2       | 0             |
| Niger        | 1              | 1                | 2          | 0       | 1     | 0    | 1       | 1             |
| Nigeria      | 52             | 17               | 54         | 11      | 52    | 0    | 13      | 17            |
| Pakistan     | 610            | 629              | 1,524      | 718     | 2,243 | 5    | 54      | 569           |
| Panama       | 0              | 0                | 0          | 0       | 0     | 0    | 0       | 0             |
| Paraguay     | 3              | 4                | 5          | 0       | 2     | 0    | 4       | 3             |
| Peru         | 3              | 42               | 16         | 46      | 76    | 0    | 1       | 27            |
| Philippines  | 0              | 2                | 0          | 10      | 10    | 0    | 0       | 3             |
| Poland       | 0              | 1                | 0          | 3       | 3     | 0    | 0       | 1             |
| Portugal     | 0              | 8                | 0          | 37      | 37    | 0    | 0       | 8             |
| Romania      | 0              | 0                | 0          | 0       | 0     | 0    | 0       | 0             |
| Russia       | 0              | 16               | 0          | 63      | 65    | 0    | 0       | 14            |
| Senegal      | 7              | 2                | 8          | 0       | 1     | 0    | 8       | 1             |
| Singapore    | 0              | 1                | 0          | 9       | 0     | 0    | 7       | 3             |
| Slovakia     | 0              | 0                | 0          | 0       | 0     | 0    | 0       | 0             |
| Slovenia     | 0              | 0                | 0          | 1       | 1     | 0    | 0       | 0             |
| Somalia      | 3              | 0                | 2          | 1       | 2     | 0    | 0       | 0             |
| South Africa | 2              | 19               | 10         | 16      | 21    | 1    | 14      | 9             |
| Spain        | 14             | 7                | 57         | 3       | 5     | 0    | 57      | 4             |
| Sri Lanka    | 1              | 1                | 1          | 2       | 3     | 0    | 0       | 1             |
| Sudan        | 11             | 29               | 28         | 0       | 19    | 0    | 17      | 22            |
| Sweden       | 0              | 0                | 0          | 0       | 0     | 0    | 0       | 0             |
| Switzerland  | 0              | 1                | 0          | 3       | 3     | 0    | 0       | 1             |
| Syria        | 9              | 20               | 41         | 0       | 26    | 0    | 22      | 14            |
| Taiwan       | 0              | 47               | 0          | 154     | 160   | 0    | 0       | 40            |
| Tajikistan   | 33             | 82               | 90         | 0       | 4     | 0    | 98      | 70            |

**Table 06A: Cotton Supply and Distribution by Country 2015/2016 (Continued)**  
(1,000 Metric Tons)

| Country        | Area Harvested | Beginning Stocks | Production | Imports | Use    | Loss | Exports | Ending Stocks |
|----------------|----------------|------------------|------------|---------|--------|------|---------|---------------|
| Tanzania       | 87             | 91               | 59         | 0       | 38     | 0    | 19      | 93            |
| Thailand       | 0              | 47               | 0          | 278     | 277    | 5    | 0       | 43            |
| Togo           | 22             | 16               | 33         | 0       | 3      | 0    | 36      | 9             |
| Tunisia        | 0              | 3                | 2          | 7       | 9      | 0    | 0       | 3             |
| Turkey         | 81             | 347              | 577        | 918     | 1,448  | 0    | 50      | 345           |
| Turkmenistan   | 109            | 278              | 316        | 0       | 142    | 0    | 272     | 180           |
| Uganda         | 14             | 14               | 20         | 0       | 1      | 0    | 17      | 15            |
| Ukraine        | 0              | 1                | 0          | 2       | 2      | 0    | 0       | 0             |
| United Kingdom | 0              | 0                | 0          | 0       | 0      | 0    | 0       | 0             |
| United States  | 712            | 795              | 2,806      | 7       | 751    | 37   | 1,993   | 827           |
| Uruguay        | 0              | 0                | 0          | 0       | 0      | 0    | 0       | 0             |
| Uzbekistan     | 280            | 250              | 827        | 0       | 348    | 0    | 544     | 185           |
| Venezuela      | 3              | 5                | 19         | 3       | 22     | 0    | 0       | 5             |
| Vietnam        | 0              | 147              | 1          | 980     | 958    | 0    | 0       | 170           |
| Yemen          | 4              | 1                | 7          | 0       | 7      | 0    | 0       | 1             |
| Zambia         | 49             | 43               | 45         | 0       | 1      | 0    | 42      | 44            |
| Zimbabwe       | 22             | 36               | 12         | 0       | 7      | 3    | 27      | 11            |
| <b>World</b>   |                |                  |            |         |        |      |         |               |
| World          | 6,640          | 24,329           | 21,057     | 7,663   | 24,220 | 8    | 7,683   | 21,136        |

**Table 09: World Cotton Supply and Distribution**  
**(1,000 HA and 1000 480-lb. Bales)**

| Country Mktg<br>Year | Beginning<br>Stocks | Area<br>Harvested | Production | Imports | Total<br>Supply | Exports | Use     | Loss   | Total Dom.<br>Cons. | Ending<br>Stocks | Stock to<br>Use % |
|----------------------|---------------------|-------------------|------------|---------|-----------------|---------|---------|--------|---------------------|------------------|-------------------|
| <b>World</b>         |                     |                   |            |         |                 |         |         |        |                     |                  |                   |
| 1985/86              | 42,126              | 31,581            | 80,142     | 28,981  | 151,249         | 28,078  | 75,330  | 252    | 75,582              | 47,589           | 63                |
| 1986/87              | 47,589              | 29,347            | 70,359     | 33,093  | 151,041         | 33,350  | 82,095  | 179    | 82,274              | 35,417           | 43                |
| 1987/88              | 35,417              | 30,871            | 81,446     | 30,529  | 147,392         | 30,103  | 84,146  | 534    | 84,680              | 32,609           | 39                |
| 1988/89              | 32,609              | 33,831            | 84,220     | 33,582  | 150,411         | 33,481  | 85,238  | 642    | 85,880              | 31,050           | 36                |
| 1989/90              | 31,050              | 31,696            | 79,721     | 32,703  | 143,474         | 31,357  | 86,905  | 234    | 87,139              | 24,978           | 29                |
| 1990/91              | 24,978              | 33,153            | 87,165     | 30,578  | 142,721         | 29,560  | 85,524  | 170    | 85,694              | 27,467           | 32                |
| 1991/92              | 27,467              | 34,758            | 95,234     | 29,024  | 151,725         | 28,204  | 86,188  | 368    | 86,556              | 36,965           | 43                |
| 1992/93              | 36,965              | 32,643            | 82,307     | 27,067  | 146,339         | 25,435  | 86,337  | 63     | 86,400              | 34,504           | 40                |
| 1993/94              | 34,504              | 30,718            | 77,679     | 27,967  | 140,150         | 26,620  | 85,560  | 143    | 85,703              | 27,827           | 33                |
| 1994/95              | 27,827              | 32,250            | 86,297     | 30,300  | 144,424         | 28,118  | 84,622  | -330   | 84,292              | 32,014           | 38                |
| 1995/96              | 32,014              | 35,920            | 93,903     | 27,004  | 152,921         | 27,396  | 85,940  | -544   | 85,396              | 40,129           | 47                |
| 1996/97              | 40,129              | 33,740            | 90,053     | 28,579  | 158,761         | 26,777  | 87,936  | -585   | 87,351              | 44,633           | 51                |
| 1997/98              | 44,633              | 33,797            | 92,368     | 25,929  | 162,930         | 26,777  | 87,267  | -581   | 86,686              | 49,467           | 57                |
| 1998/99              | 49,467              | 32,885            | 86,073     | 24,480  | 160,020         | 23,517  | 84,765  | -1,114 | 83,651              | 52,852           | 62                |
| 1999/00              | 52,852              | 32,350            | 87,923     | 27,976  | 168,751         | 27,126  | 91,087  | -602   | 90,485              | 51,140           | 56                |
| 2000/01              | 51,140              | 32,012            | 89,111     | 26,229  | 166,480         | 26,156  | 92,178  | -1,424 | 90,754              | 49,570           | 54                |
| 2001/02              | 49,570              | 33,719            | 98,507     | 29,322  | 177,399         | 29,081  | 94,417  | -781   | 93,636              | 54,682           | 58                |
| 2002/03              | 54,682              | 30,779            | 91,026     | 30,233  | 175,941         | 30,400  | 98,462  | -804   | 97,658              | 47,883           | 49                |
| 2003/04              | 47,883              | 32,263            | 96,694     | 34,175  | 178,752         | 33,152  | 98,083  | -909   | 97,174              | 48,426           | 49                |
| 2004/05              | 48,426              | 35,759            | 121,517    | 33,985  | 203,928         | 34,949  | 109,220 | -1,245 | 107,975             | 61,004           | 56                |
| 2005/06              | 61,004              | 34,503            | 116,333    | 44,693  | 222,030         | 44,922  | 116,961 | -1,793 | 115,168             | 61,940           | 53                |
| 2006/07              | 61,940              | 34,713            | 123,013    | 38,305  | 223,258         | 37,401  | 124,263 | -1,715 | 122,548             | 63,309           | 51                |
| 2007/08              | 63,309              | 32,889            | 120,577    | 39,463  | 223,349         | 38,893  | 123,782 | -2,094 | 121,688             | 62,768           | 51                |
| 2008/09              | 62,768              | 30,630            | 108,300    | 30,623  | 201,691         | 30,252  | 110,371 | -1,536 | 108,835             | 62,604           | 57                |
| 2009/10              | 62,604              | 30,233            | 103,359    | 36,916  | 202,879         | 35,664  | 119,545 | -62    | 119,483             | 47,732           | 40                |
| 2010/11              | 47,732              | 33,713            | 117,630    | 36,300  | 201,662         | 34,821  | 115,461 | 9      | 115,470             | 51,371           | 44                |
| 2011/12              | 51,371              | 36,100            | 127,643    | 45,460  | 224,474         | 45,956  | 104,256 | -370   | 103,886             | 74,632           | 72                |
| 2012/13              | 74,632              | 34,407            | 123,900    | 47,664  | 246,196         | 46,411  | 108,450 | -798   | 107,652             | 92,133           | 85                |
| 2013/14              | 92,133              | 32,726            | 120,365    | 41,236  | 253,734         | 41,004  | 109,782 | -363   | 109,419             | 103,311          | 94                |
| 2014/15              | 103,311             | 34,214            | 119,187    | 36,065  | 258,563         | 35,299  | 111,411 | 113    | 111,524             | 111,740          | 100               |
| 2015/16              | 111,740             | 30,499            | 96,713     | 35,194  | 243,647         | 35,289  | 111,241 | 39     | 111,280             | 97,078           | 87                |
| 2016/17              | 97,078              | 29,332            | 106,304    | 36,098  | 239,480         | 36,099  | 112,592 | -120   | 112,472             | 90,909           | 81                |

**Table 10: United States Cotton Supply and Distribution**  
**(1,000 HA and 1000 480-lb. Bales)**

| Country Mktg<br>Year | Area<br>Harvested | Yield | Beginning<br>Stocks | Production | Imports | Total<br>Supply | Exports | Use    | Loss | Ending<br>Stocks | Stock to<br>Use % |
|----------------------|-------------------|-------|---------------------|------------|---------|-----------------|---------|--------|------|------------------|-------------------|
| <b>United States</b> |                   |       |                     |            |         |                 |         |        |      |                  |                   |
| 1980/81              | 5,348             | 453   | 3,000               | 11,122     | 28      | 14,150          | 5,926   | 5,891  | -335 | 2,668            | 23                |
| 1981/82              | 5,601             | 608   | 2,668               | 15,646     | 26      | 18,340          | 6,567   | 5,264  | -123 | 6,632            | 56                |
| 1982/83              | 3,939             | 661   | 6,632               | 11,963     | 20      | 18,615          | 5,207   | 5,513  | -42  | 7,937            | 74                |
| 1983/84              | 2,973             | 569   | 7,937               | 7,771      | 12      | 15,720          | 6,786   | 5,921  | 238  | 2,775            | 22                |
| 1984/85              | 4,200             | 673   | 2,775               | 12,982     | 24      | 15,781          | 6,215   | 5,538  | -74  | 4,102            | 35                |
| 1985/86              | 4,140             | 706   | 4,102               | 13,432     | 33      | 17,567          | 1,960   | 6,413  | -154 | 9,348            | 112               |
| 1986/87              | 3,427             | 618   | 9,348               | 9,731      | 3       | 19,082          | 6,684   | 7,452  | -80  | 5,026            | 36                |
| 1987/88              | 4,059             | 792   | 5,026               | 14,760     | 2       | 19,788          | 6,582   | 7,617  | -182 | 5,771            | 41                |
| 1988/89              | 4,835             | 694   | 5,771               | 15,411     | 5       | 21,187          | 6,148   | 7,782  | 165  | 7,092            | 51                |
| 1989/90              | 3,860             | 688   | 7,092               | 12,196     | 2       | 19,290          | 7,694   | 8,759  | -163 | 3,000            | 18                |
| 1990/91              | 4,748             | 711   | 3,000               | 15,505     | 4       | 18,509          | 7,793   | 8,657  | -285 | 2,344            | 14                |
| 1991/92              | 5,245             | 731   | 2,344               | 17,614     | 13      | 19,971          | 6,646   | 9,613  | 8    | 3,704            | 23                |
| 1992/93              | 4,501             | 785   | 3,704               | 16,218     | 1       | 19,923          | 5,201   | 10,250 | -190 | 4,662            | 30                |
| 1993/94              | 5,173             | 679   | 4,662               | 16,134     | 6       | 20,802          | 6,862   | 10,418 | -8   | 3,530            | 20                |
| 1994/95              | 5,391             | 794   | 3,530               | 19,662     | 20      | 23,212          | 9,402   | 11,198 | -38  | 2,650            | 13                |
| 1995/96              | 6,478             | 602   | 2,650               | 17,900     | 408     | 20,958          | 7,675   | 10,647 | 27   | 2,609            | 14                |
| 1996/97              | 5,216             | 791   | 2,609               | 18,942     | 403     | 21,954          | 6,865   | 11,126 | -8   | 3,971            | 22                |
| 1997/98              | 5,425             | 754   | 3,971               | 18,793     | 13      | 22,777          | 7,500   | 11,349 | 41   | 3,887            | 21                |
| 1998/99              | 4,324             | 701   | 3,887               | 13,918     | 439     | 18,244          | 4,298   | 10,401 | -394 | 3,939            | 27                |
| 1999/00              | 5,433             | 680   | 3,939               | 16,968     | 97      | 21,004          | 6,750   | 10,194 | 145  | 3,915            | 23                |
| 2000/01              | 5,282             | 708   | 3,915               | 17,188     | 16      | 21,119          | 6,740   | 8,862  | -483 | 6,000            | 38                |
| 2001/02              | 5,596             | 790   | 6,000               | 20,303     | 21      | 26,324          | 11,000  | 7,696  | 180  | 7,448            | 40                |
| 2002/03              | 5,025             | 746   | 7,448               | 17,209     | 67      | 24,724          | 11,900  | 7,273  | 166  | 5,385            | 28                |
| 2003/04              | 4,858             | 818   | 5,385               | 18,255     | 45      | 23,685          | 13,758  | 6,266  | 211  | 3,450            | 17                |
| 2004/05              | 5,284             | 958   | 3,450               | 23,251     | 29      | 26,730          | 14,436  | 6,691  | 108  | 5,495            | 26                |
| 2005/06              | 5,586             | 931   | 5,495               | 23,890     | 28      | 29,413          | 17,673  | 5,871  | -200 | 6,069            | 26                |
| 2006/07              | 5,152             | 912   | 6,069               | 21,588     | 19      | 27,676          | 12,959  | 4,935  | 303  | 9,479            | 53                |
| 2007/08              | 4,245             | 985   | 9,479               | 19,207     | 12      | 28,698          | 13,634  | 4,584  | 429  | 10,051           | 55                |
| 2008/09              | 3,063             | 912   | 10,051              | 12,825     | 0       | 22,876          | 13,261  | 3,541  | -263 | 6,337            | 38                |
| 2009/10              | 3,049             | 870   | 6,337               | 12,183     | 0       | 18,520          | 12,037  | 3,550  | -14  | 2,947            | 19                |
| 2010/11              | 4,330             | 910   | 2,947               | 18,102     | 9       | 21,058          | 14,376  | 3,900  | 182  | 2,600            | 14                |
| 2011/12              | 3,829             | 886   | 2,600               | 15,573     | 19      | 18,192          | 11,714  | 3,300  | -172 | 3,350            | 22                |
| 2012/13              | 3,772             | 999   | 3,350               | 17,314     | 10      | 20,674          | 13,026  | 3,500  | 348  | 3,800            | 23                |
| 2013/14              | 3,053             | 921   | 3,800               | 12,909     | 13      | 16,722          | 10,530  | 3,550  | 292  | 2,350            | 17                |
| 2014/15              | 3,783             | 939   | 2,350               | 16,319     | 12      | 18,681          | 11,246  | 3,575  | 210  | 3,650            | 25                |
| 2015/16              | 3,268             | 859   | 3,650               | 12,888     | 33      | 16,571          | 9,153   | 3,450  | 168  | 3,800            | 30                |
| 2016/17              | 3,853             | 974   | 3,800               | 17,230     | 10      | 21,040          | 14,000  | 3,300  | 40   | 3,700            | 21                |

**Table 11: Foreign Cotton Supply and Distribution**  
(1,000 HA and 1000 480-lb. Bales)

| Country Mktg<br>Year | Area<br>Harvested | Yield | Beginning<br>Stocks | Production | Imports | Total<br>Supply | Exports | Use     | Loss   | Ending<br>Stocks |
|----------------------|-------------------|-------|---------------------|------------|---------|-----------------|---------|---------|--------|------------------|
| <b>Total Foreign</b> |                   |       |                     |            |         |                 |         |         |        |                  |
| 1980/81              | 27,021            | 421   | 18,232              | 52,255     | 27,225  | 97,712          | 20,339  | 59,130  | 302    | 17,941           |
| 1981/82              | 27,337            | 424   | 17,941              | 53,193     | 25,672  | 96,806          | 19,197  | 58,045  | 362    | 19,202           |
| 1982/83              | 27,455            | 431   | 19,202              | 54,369     | 26,051  | 99,622          | 20,308  | 61,453  | 344    | 17,517           |
| 1983/84              | 27,947            | 456   | 17,517              | 58,506     | 27,047  | 103,070         | 18,547  | 62,759  | 258    | 21,506           |
| 1984/85              | 29,541            | 558   | 21,506              | 75,724     | 27,605  | 124,835         | 20,985  | 65,278  | 548    | 38,024           |
| 1985/86              | 27,441            | 529   | 38,024              | 66,710     | 28,948  | 133,682         | 26,118  | 68,917  | 406    | 38,241           |
| 1986/87              | 25,920            | 509   | 38,241              | 60,628     | 33,090  | 131,959         | 26,666  | 74,643  | 259    | 30,391           |
| 1987/88              | 26,812            | 542   | 30,391              | 66,686     | 30,527  | 127,604         | 23,521  | 76,529  | 716    | 26,838           |
| 1988/89              | 28,996            | 517   | 26,838              | 68,809     | 33,577  | 129,224         | 27,333  | 77,456  | 477    | 23,958           |
| 1989/90              | 27,836            | 528   | 23,958              | 67,525     | 32,701  | 124,184         | 23,663  | 78,146  | 397    | 21,978           |
| 1990/91              | 28,405            | 549   | 21,978              | 71,660     | 30,574  | 124,212         | 21,767  | 76,867  | 455    | 25,123           |
| 1991/92              | 29,513            | 573   | 25,123              | 77,620     | 29,011  | 131,754         | 21,558  | 76,575  | 360    | 33,261           |
| 1992/93              | 28,142            | 511   | 33,261              | 66,089     | 27,066  | 126,416         | 20,234  | 76,087  | 253    | 29,842           |
| 1993/94              | 25,545            | 525   | 29,842              | 61,545     | 27,961  | 119,348         | 19,758  | 75,142  | 151    | 24,297           |
| 1994/95              | 26,859            | 540   | 24,297              | 66,635     | 30,280  | 121,212         | 18,716  | 73,424  | -292   | 29,364           |
| 1995/96              | 29,442            | 562   | 29,364              | 76,003     | 26,596  | 131,963         | 19,721  | 75,293  | -571   | 37,520           |
| 1996/97              | 28,524            | 543   | 37,520              | 71,111     | 28,176  | 136,807         | 19,912  | 76,810  | -577   | 40,662           |
| 1997/98              | 28,372            | 565   | 40,662              | 73,575     | 25,916  | 140,153         | 19,277  | 75,918  | -622   | 45,580           |
| 1998/99              | 28,561            | 550   | 45,580              | 72,155     | 24,041  | 141,776         | 19,219  | 74,364  | -720   | 48,913           |
| 1999/00              | 26,917            | 574   | 48,913              | 70,955     | 27,879  | 147,747         | 20,376  | 80,893  | -747   | 47,225           |
| 2000/01              | 26,730            | 586   | 47,225              | 71,923     | 26,213  | 145,361         | 19,416  | 83,316  | -941   | 43,570           |
| 2001/02              | 28,123            | 605   | 43,570              | 78,204     | 29,301  | 151,075         | 18,081  | 86,721  | -961   | 47,234           |
| 2002/03              | 25,754            | 624   | 47,234              | 73,817     | 30,166  | 151,217         | 18,500  | 91,189  | -970   | 42,498           |
| 2003/04              | 27,405            | 623   | 42,498              | 78,439     | 34,130  | 155,067         | 19,394  | 91,817  | -1,120 | 44,976           |
| 2004/05              | 30,475            | 702   | 44,976              | 98,266     | 33,956  | 177,198         | 20,513  | 102,529 | -1,353 | 55,509           |
| 2005/06              | 28,917            | 696   | 55,509              | 92,443     | 44,665  | 192,617         | 27,249  | 111,090 | -1,593 | 55,871           |
| 2006/07              | 29,561            | 747   | 55,868              | 101,425    | 38,272  | 195,565         | 24,442  | 119,315 | -2,018 | 53,826           |
| 2007/08              | 28,644            | 771   | 53,826              | 101,370    | 39,440  | 194,636         | 25,259  | 119,186 | -2,523 | 52,714           |
| 2008/09              | 27,567            | 754   | 52,714              | 95,475     | 30,616  | 178,805         | 16,991  | 106,822 | -1,273 | 56,265           |
| 2009/10              | 27,184            | 730   | 56,265              | 91,176     | 36,911  | 184,352         | 23,627  | 115,989 | -48    | 44,784           |
| 2010/11              | 29,383            | 737   | 44,784              | 99,528     | 36,287  | 180,599         | 20,445  | 111,557 | -173   | 48,770           |
| 2011/12              | 32,271            | 756   | 48,770              | 112,070    | 45,437  | 206,277         | 34,242  | 100,952 | -198   | 71,281           |
| 2012/13              | 30,635            | 758   | 71,281              | 106,586    | 47,650  | 225,517         | 33,385  | 104,946 | -1,146 | 88,332           |
| 2013/14              | 29,673            | 788   | 88,332              | 107,456    | 41,217  | 237,005         | 30,474  | 106,227 | -655   | 100,959          |
| 2014/15              | 30,431            | 736   | 100,959             | 102,868    | 36,045  | 239,872         | 24,053  | 107,828 | -97    | 108,088          |
| 2015/16              | 27,231            | 670   | 108,088             | 83,825     | 35,153  | 227,066         | 26,136  | 107,783 | -129   | 93,276           |
| 2016/17              | 25,479            | 761   | 93,276              | 89,074     | 36,080  | 218,430         | 22,099  | 109,284 | -160   | 87,207           |